



GENERER ANGUS



Saturday
MARCH 16, 2024
1pm

AT THE RANCH
Olive, MT

GNERER ANGUS



Chris: (406) 935-3183

Joe: (406) 498-6113

Steve: (406) 860-8081

Sale Barn: (406) 436-2077

Email: krista.gnerer@hotmail.com

www.GnererAngus.com

Welcome from the Gnerer Angus Family!

What a great year we have been blessed with! The late Spring, Summer and Fall of 2023 boasted some of the best temperatures and precipitation we have seen in some time. The hay crop was ample and the mild summer and wet fall was so darn pleasant. Other than that nasty record setting cold snap, January and February 2024 have been one of the nicest we can remember, temperature wise. The calf prices are where they need to be and with the low cow inventory in the U.S., we are hoping that continues for years to come.

As you look over the catalog, we hope you notice the great group of sires that are represented. We are so pleased with the thickness and correctness of the bulls in this offering. The sires we have selected have proven dams behind them and are substantial in all areas of their EPD profiles. As always, we put an emphasis on breeding for an efficient, fertile, and profitable FEMALE. We are excited that the American Angus Association has added a new longevity EPD that will be rolled out next year. A cow that breeds back year after year and brings in a big calf each fall has been a staple of our program. We are ecstatic that the longevity EPD will be another tool our buyers can use to select sires that will produce lasting females and increase productivity and profitability in their herds. We are also excited to be offering more embryo calves out of our proven and time-tested cows. We are using all the avenues including genetics, EPD profiling, and embryos to progressively improve our herd. We also have consistently culled our herd from problem cows and calves and will continue to do so. Perfecting and improving our herd equals profitability, consistency and time ahead for our valued customers.

There will be 50 private treaty bulls available if you find out you need more later in the spring and the price will be no lower than sale bottom. With the record setting frigid temperatures this winter a person ought to have their herd bulls semen checked.

We need to really praise all of our customers for believing in our program and choosing us year after year. We wouldn't have the program we do without the relationships we have built with our loyal customers. The SUCCESS and satisfaction of our customers is number one on the priority list at Gnerer Angus.

We look forward to discussing your herd's needs and goals. Please feel free to come and view the bulls! The Gnerer's love to talk and love to talk cattle even more, so please call anytime or even better, stop in!

We look forward to seeing you sale day!

Sincerely,

THE GNERER ANGUS FAMILY

Chris & Krista Gnerer

Joe & Renee Gnerer

Maureen Gnerer

Steve & Ila Gnerer

Greg & Hillary Gnerer



Chris

Krista

Maureen

Renee

Joe



AUCTIONEER

Mick Mosher: 406-670-7581

SALE DAY REPRESENTATIVES

Chris Gnerer: 406-935-3183

Joe Gnerer: 406-498-6113

Greg Gnerer: 406-860- 0244

Steve Gnerer: 406-860-8081

Matt Wznick, Western Ag Reporter: 406-489-2414

Wrye Williams, TriState Livestock News: 406-938-3071

HERD HEALTH

Broadus Veterinary Clinic

Birth: Alpha 7, weighed & tagged

Branding & Weaning: Pyramid 5 plus Prespense, Inforce 3, BarVac7 plus Somnus, Multi-Min & Ivermectin; Clean-Up 2 prior to sale day.

FERTILITY

All bulls have passed a breeding soundness exam and fertility check performed by Dr. Liam Robbins of Fallon County Vet Clinic.

DELIVERY & WINTERING

\$100 off per bull if picked up on sale day. Free delivery up to 300 miles on all bulls. Free delivery up to 500 miles on purchases exceeding \$5000 & at cost beyond 500 miles. Bulls will be kept until April 1st, 2024, then we will contact you to arrange a delivery date. If you are unable to receive them in April, feeding arrangements can be made at buyers expense.

SALE ORDER & ONLINE BIDDING

Bulls will sell in numerical order starting with Lot 1.

If you are unable to attend the sale, bulls can be bought online using Frontier Live Sale or via telephone by contacting any Sale Day Representative.

BREEDING SEASON GUARANTEE

Full Breeding Season Guarantee (90 days from turn out) on bulls purchased for \$3000 or more. If a problem occurs, we will give you a suitable replacement bull if one is available, or you will receive full credit minus the salvage value at next year's sale. Notify us of injury as soon as possible on all bulls. We reserve the right to a second opinion by the veterinarian of our choice.

LEGAL

All persons who attend do so at their own risk. Gnerer Angus assumes no liability, legal or otherwise, for any accidents which may occur. Owners will retain 1/3 semen interest on all bulls.

SALE LOCATION

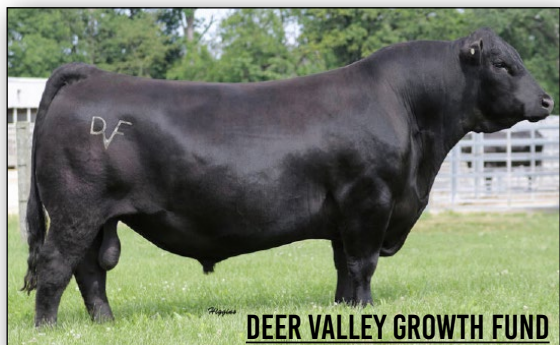
Sale held in a heated facility. Ranch is between Miles City and Broadus, MT, located 13 miles north of Broadus on HWY 59 on Ash Creek Rd. Signs will be posted.

DETAILS

Complimentary lunch served at 11am. The sale begins at 1pm (both MST).

MARKETING

Catalog, ad designs, & bull videos by Horizon Marketing Agency, (406) 853-8426



REG: AAA +*18827828

Basin Payweight 006S
Basin Payweight 1682
21AR O Lass 7017

Plattemere Weigh Up K360
Deer Valley Rita 36113
Deer Valley Rita 9457

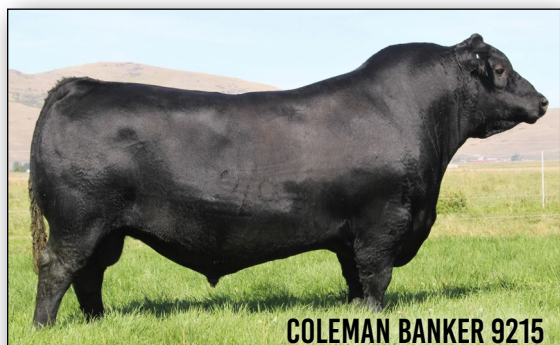
Vermilion Payweight J847
Basin Lucy 3829
HARB Pendleton 765 J H
21AR O Lass F24A

Sitz Upward 307R
Barbara of Plattemere 337
G A R New Design 5050
G A R Ext 614

Growth Fund is a dependable, highly proven Basin Payweight son. He has risen to the top of herds everywhere with his remarkable EPD profile and standout progeny. His calves came easy, add length, and grow like crazy. Invest in Growth Fund for built in profit!

CED	BW	WW	YW	SC	DOC	MILK	CW	MARB	RE	\$EN	\$M	\$F	\$B
8	1.3	89	165	0.79	21	30	86	0.49	0.8	-40	68	135	178

Lots 1 & 6 - 3/4 brothers



REG: AAA +*19583404

Coleman Charlo 0256
Coleman Bravo 6313
Coleman Donna 714

Connealy Thunder
Coleman Donna 4203
Coleman Donna 714

O C C Paxton 730P
Bohi Abigale 6014
Connealy Onward
Coleman Donna 386

Baldrige Kaboom K243 KCF
Parka of Conanga 241
Connealy Onward
Coleman Donna 386

Coleman Banker 9215 was the \$75,000 top-seller through the Coleman Angus 2021 fall production sale. He was the second heaviest bull in his contemporary group and was the Number 1 Bull for Average Daily Gain. He has an actual birth weight of 75 lbs. The combination of this tremendous gain and calving-ease makes him the Highest Growth sire in the Coleman Angus program.

CED	BW	WW	YW	SC	DOC	MILK	CW	MARB	RE	\$EN	\$M	\$F	\$B
17	-2.1	63	117	0.66	32	40	44	0.36	0.5	-10	109	84	120

Lots 79 & 82 - 3/4 brothers, Lots 70 & 92 - 3/4 brothers
Lots 51 & 67 - 3/4 brothers



REG: AAA #*18626847

Connealy Consensus 7229
HF Syndicate 213Z
HF Miss Blackcap 27R

Young Dale Xclusive 25X
U2 Erelite 109Z
U-2 Erelite 1X

Connealy Consensus
Blue Lilly of Conanga 16
TC Freedom 104
HF Miss Blackcap 50N

Young Dale Knock Out 134U
Young Dale Pollyanna 60T
S A V Final Answer 0035
U-2 Erelite 8109U

Thick and quiet are what first comes to mind with our Coalition offspring. His calves are deep ribbed and wide with expressive muscle shape. U2's is backed by a great cow family and his flawless dam sold for \$140,000 at the U2 ranch last fall.

CED	BW	WW	YW	SC	DOC	MILK	CW	MARB	RE	\$EN	\$M	\$F	\$B
11	0.9	56	110	0.92	36	28	38	0.41	0.52	-16	63	94	136

Lots 38, 39, 40, 41 - Full brothers, Lots 87 & 122 - 3/4 brothers
Lots 23, 80, 93 - 3/4 brothers



REG: AAA #+*17666102

S A V Final Answer 0035
Connealy Capitalist 028
Prides Pita of Conanga 8821

C A Future Direction 5321
LD Dixie Erica 2053
LD Dixie Erica Oar 0853

Sitz Traveler 8180
S A V Emulous 8145
C R A Bextor 872 5205 608
Prides Trav of Conanga 6499

G A R Precision 1680
C A Miss Power Fix 308
LD Royce Onaroll 810
Dixie Erica of R R 8553

LD Capitalist 316 is a thick made, calving ease sire that stamps his calves the same. His high customer satisfaction has made him one of the most popular, heaviest used Angus sire in recent years. His daughters are the keeping kind and will make an improvement in any herd.

CED	BW	WW	YW	SC	DOC	MILK	CW	MARB	RE	\$EN	\$M	\$F	\$B
12	-0.6	62	108	0.38	14	23	52	0.74	0.58	-1	67	105	158

Lots 10 & 15 - 3/4 brothers
Lots 3 & 78 - 3/4 brothers



REG: AAA #+*18734838

O C C Paxton 730P
 Coleman Charlo 0256
 Bohi Abigale 6014

 Connealy Onward
 Coleman Donna 714
 Coleman Donna 386

O C C Focus 813F
 O C C Blackbird 736K
 Sitz Traveler 8180
 S A V Abigale 6062

 Connealy Lead On
 Altune of Conanga 6104
 Basin Rainmaker 654X
 KMK Donna J311

Coleman Bravo 6313 is a true breeding bull that is highly respected by cattlemen around the world, industry proven, and a breed leader in making productive females with femininity and beautiful udders in a wedge-shape package. Bravo was the \$450,000 all-time record-selling bull and featured Lot 1 bull of the 2018 Coleman Angus Ranch Bull Sale. This

CED	BW	WW	YW	SC	DOC	MILK	CW	MARB	RE	\$EN	\$M	\$F	\$B
15	-0.2	52	97	0.79	31	22	28	0.07	0.41	+20	103	62	81

powerful and popular bull has dominant capacity and the correctness of a true breeding bull to follow the tradition of his legendary sire.

He is a son of Coleman Donna 714, who combines a progeny birth ratio of 89 with a progeny weaning ratio of 115 on four natural calves and a progeny yearling ratio of 112 on three head with 121 daughters in production with progeny production records of 101.

GNERER ROCKY 8663

REG: AAA *19314233

K C F Bennett TheRock A473
 K C F Bennett Boulder
 K C F Miss 534 U431

 Gnerer Up Side 3923
 Gnerer Uptown Girl 663
 Gnerer Rose 34

 K C F Bennett Southside
 K C F Miss Protege W148
 CAR Efficient 534
 K C F Miss 6106 R309

 Sitz Upside 547W
 Gnerer Dellas Ndy 923 M
 Gnerer Danny Boy 990 G
 Gnerer Black Rose NDY 853G

CED	BW	WW	YW	SC	DOC	MILK
0	3.7	82	141	1.76	30	27
CW	MARB	RE	\$EN	\$M	\$F	\$B
74	0.47	0.76	-36	61	119	165

Lots 26, 53, 57, 68 - 3/4 brothers

VDAR RESILIENT 2171

REG: AAA *20013127

Sitz Stellar 726D
 Sitz Resilient 10208
 Sitz Miss Burgess 1856

 V D A R Cedar Wind 8111
 V D A R Lucy 8302
 V D A R Lucy 6228

 Mohnen Substantial 272
 SITZ Pride 200B
 Sitz Top Game 561X
 Sitz Miss Burgess 4381

 Cole Creek Cedar Ridge 1V
 V D A R Chloe 9727
 Nichols Extra K205
 V D A R Lucy 0359

CED	BW	WW	YW	SC	DOC	MILK
8	-0.1	71	118	0.76	8	30
CW	MARB	RE	\$EN	\$M	\$F	\$B
51	0.42	0.62	-6	89	90	130

Lots 22 & 125 - 3/4 brothers

MR SON SHINE 4518

REG: AAA *19085090

V D A R Hero 7072
 V D A R Sonny Boy 1194
 V D A R Lass 2582

 V D A R Cedar Wind 8111
 ECC Mix Wix 1107-408
 VDAR Miss Wix 1107

 DFA Hero 6017
 V D A R Hazel 0319
 Crook Mt Windy 17
 V D A R Lass 9732

 Cole Creek Cedar Ridge 1V
 V D A R Chloe 9727
 Vermilion Dateline 7078
 V D A R Miss Wix 5027

CED	BW	WW	YW	SC	DOC	MILK
5	2.4	68	112	1.02	10	18
CW	MARB	RE	\$EN	\$M	\$F	\$B
48	0.19	0.37	-23	42	92	123

Lots 29 & 69 - 3/4 brothers

GNERER CLARENCE 972

REG: AAA 19552261

Ginger Hill Treasure 233
 V D A R Clarence 2285
 V D A R Elluna 3105

 V D A R Winston 2165
 Gnerer Marian Corners 72
 Gnerer Tressa's Corner 528

 Ginger Hill Helen 880
 V D A R Cedar Wind 8111
 V D A R Elluna 1437

 V D A R Churchill 1063
 V D A R Lass 3114
 V D A R Four Corners 8232
 Gnerer Tressa 828S

CED	BW	WW	YW	SC	DOC	MILK
8	0.9	60	103	1.338	13	25
CW	MARB	RE	\$EN	\$M	\$F	\$B
25	0.46	0.05	-4	75	55	89

JANSSEN CARTWRIGHT 9105

REG: AAA +*19801313

Coleman Charlo 0256
 S A V President 6847
 S A V Blackcap May 4136

 S A V Harvester 0338
 Janssen Madame Pride 5102
 S A V Madame Pride 8827

 O C C Paxton 730P
 Bohi Abigale 6014
 S A V 8180 Traveler 004
 S A V May 2397

 S A V Heritage 6295
 S A V Emblynette 7749
 S A V 004 Density 4336
 S A V Madame Pride 2330

CED	BW	WW	YW	SC	DOC	MILK
10	2.7	72	122	0.71	24	24
CW	MARB	RE	\$EN	\$M	\$F	\$B
36	0.21	0.64	-20	72	71	103

GNERER TAHOE 0123

REG: AAA 19902464

Tehama Upward Y238
 Tehama Tahoe B767
 Tehama Mary Blackbird Y684

 Basin Payweight 1682
 Gnerer Rose 531
 Gnerer Black Rose 871g

 Sitz Upward 307R
 Tehama Elite Blackbird T735
 S A V Final Answer 0035
 Tehama Mary Blackbird T073

 Basin Payweight 0065
 21AR O Lass 7017
 Gnerer 420 New Design 561 C
 Gnerer Black Rose SA04 G

CED	BW	WW	YW	SC	DOC	MILK
18	-4.3	52	95	1.23	21	23
CW	MARB	RE	\$EN	\$M	\$F	\$B
24	0.94	0.47	4	81	71	133

Tahoe 0123 was the standout Tehama Tahoe son of our 2020 bull sale. His dam is a beautiful Payweight daughter, a favorite in our herd. The cross is the best of both worlds, calving ease paired with high growth and thickness. This moderate-framed beef cake will add dimension and pounds without adding frame. We will be AI'ing cows this spring to him and semen is available.



REG: AAA *19836564

Connealy Judgment
 KG Justified 3023
 KG Miss Magic 1443
 Barstow Cash
 RL Cash Lady 8988
 RL Mandate lady 2981

Connealy Consensus 7229
 Entrine of Conanga 9876
 Sitz Wisdom 481T
 KG Miss Magic 3528
 Sitz Dash 10277
 Barstow Queen W16
 SydGen Mandate 6079
 7 Z Lady Deluxe 981

A fresh pedigree for customers looking for a cowmaker with mating flexibility. Justice is a high growth, high phenotype Justified son that moves the needle for Heifer Pregnancy, feet, and docility. He is moderate-sized, big-ribbed and massive hipped with a lot of eye appeal and great feet. Expect him to make outstanding replacement females. For those breeding for balanced-trait, problem-free cattle, Justice is a must-use sire.

Lots 11, 46, 58 - ¾ brothers

CED	BW	WW	YW	SC	DOC	MILK	CW	MARB	RE	\$EN	\$M	\$F	\$B
12	-2	69	130	1.82	27	33	55	0.69	0.69	-14	98	96	146

COLEMAN JUSTIFIED 132

REG: AAA +*2015632

Connealy Judgment
 KG Justified 3023
 KG Miss Magic 1443

S A V Resource 1441
 Coleman Donna 504
 Coleman Donna 714

Connealy Consensus 7229
 Entrine of Conanga 9876
 Sitz Wisdom 481T
 KG Miss Magic 3528

Rito 707 of Ideal 3407 7075
 S A V Blackcap May 4136
 Connealy Onward
 Coleman Donna 386

CED	BW	WW	YW	SC	DOC	MILK
11	0	70	126	1.63	27	28
CW	MARB	RE	\$EN	\$M	\$F	\$B
43	0.53	0.47	-20	80	78	119



Sire of RL Justice & Coleman Justified 132



Sire of VDAR Cedar Wind 5689 and VDAR Cedar Wind 4628 and grandsire of VDAR Showdown 5059

VDAR SHOWDOWN 5059

REG: AAA 19447282

V D A R Sonny Boy 1194
 VDAR Showdown 7236
 V D A R Forever Lady 1409

V D A R Cedar Wind 8111
 V D A R Lucy 7950
 V D A R Lucy 5354

V D A R Hero 7072
 V D A R Lass 2582
 HA Windfall 6011
 V D A R Forever Lady 9770

Cole Creek Cedar Ridge IV
 V D A R Chloe 9727
 Koupal Juneau 797
 V D A R Lucy 6629

CED	BW	WW	YW	SC	DOC	MILK
3	3	63	115	1.04	20	32
CW	MARB	RE	\$EN	\$M	\$F	\$B
45	0.49	0.2	-23	61	88	127

Showdown 505 was the first bull to sell at the Van Dyke Angus 2020 Bull Sale and was our favorite Showdown son. His impressive EPD spread, depth, muscle definition, and perfect feet were almost as attractive as his stacked genetics behind him. He is as impressive to look at in the flesh as he is on paper.

Lots 27 & 84 - ¾ brothers
 Lots 21 & 59 - ¾ brothers

VDAR CEDAR WIND 5689

REG: AAA *19447315

Cole Creek Cedar Ridge IV
 V D A R Cedar Wind 8111
 V D A R Chloe 9727

Koupal Juneau 797
 V D A R Beauty 4321
 V D A R Beauty 0355

Cole Creek Black Cedar 46P
 Cole Creek Clovanada 49S
 V D A R Really Windy 4097
 V D A R Chloe 6320

O C C Juneau 807J
 Koupals Elba 187
 V D A R Really Windy 4097
 V D A R Beauty 8633

CED	BW	WW	YW	SC	DOC	MILK
11	1.7	56	98	1.80	14	32
CW	MARB	RE	\$EN	\$M	\$F	\$B
30	0.09	0.31	+2	83	64	84

At the 2020 VDAR Bulls Sale we were able to see VDAR Beauty 4321 in the flesh and she is a standout. She has perfect, uniform udders and is fleshy, feminine, deep, with a wide base. Our favorite mothers on the ranch are hands down our Cedar Wind 8111 progeny. We are ecstatic to have the cross of two Angus greats and watch the offspring grow and perform in our herd. The 568 calves come easy and are complete in every way!

FRONTIER LIVE SALE

This Sale will be broadcast live on www.frontierlivesale.com. To view a sale, 1. Create an account, if you have already done so skip to next step. To create a new account, click on the word **Registration** in the upper right hand corner. You must fill out the information requested. Then click **Create Account**. An email will be sent to your email account you provided. Please click the link in the email to activate your new account.




2. Once you click the link, your account will now be activated
3. At this point, you may click **Continue To Browse Our Site**. This will allow you to view all upcoming auctions.
4. Once you see the auction you are interested in, click **Get Approved To Bid** for absentee and live bidding.
5. Please enter your information in the form. Depending on the auctioneer, different information may be requested. Click **I agree to sale terms and conditions**. Congratulations! You are now approved for the auction. Now that you're approved you can participate in the auction and bid on its items.
6. Login on sale day with the credentials provided at registration.

Call 866-313-0123 for tech help.

Visit us online

www.GnererAngus.com

Find us on 

ANGUS. ONLY ANGUS.

There's only one DNA profile created specifically for Angus cattle.

Angus GS™ is the new standard in genetic testing for Angus cattle. Created by Angus Genetics, the profile is purely Angus DNA. So it will have better predictability and deliver more power and accuracy than any previous generation genomic enhanced EPD, and at greater value. Visit angus.org/agi for the test that only Angus Genetics could create.

FOR ANGUS. BY ANGUS.

ANGUSGS
Powered by Neogen GeneSeek

1**Gnerer Growth Fund 3818**

DOB: 01/31/23 AAA: 20632050 BW WT: 80 205 WT: 698

ANGUSGS
Powered by MyAngus Genetics

CED	BW	WW	WN RATIO	YW	SC	DOC
12	-0.4	58	108	110	0.26	24

Basin Payweight 1682
Deer Valley Growth Fund
Deer Valley Rita 36113

Gnerer Enterprize 012 M
Gnerer Canyon 280
Gnerer 6595 991 G

Basin Payweight 0065
21AR O Lass 7017
Plattemere Weigh Up K360
Deer Valley Rita 9457
VDAR Enterprise 2059
Gnerer Tressa Frft 825M
Sitz Alliance 6595
Gnerer Dellas Nebraska 509 G

MILK	CW	MARB	RE	\$EN	\$M	\$F	\$B
26	46	0.25	0.47	-8	73	94	122

**2****Gnerer Growth Fund 3819**

DOB: 02/01/23 AAA: 20647157 BW WT: 76 205 WT: 713

ANGUSGS
Powered by MyAngus Genetics

CED	BW	WW	WN RATIO	YW	SC	DOC
12	0	79	110	135	0.46	10

Basin Payweight 1682
Deer Valley Growth Fund
Deer Valley Rita 36113

Connealy Black Granite
Gnerer Black Granite 87
Gnerer Kays Sky 320

Basin Payweight 0065
21AR O Lass 7017
Plattemere Weigh Up K360
Deer Valley Rita 9457
Connealy Consensus 7229
Eura Elga of Conanga 9109
Sitz Upside 547W
Gnerer Big Sky 05 M

MILK	CW	MARB	RE	\$EN	\$M	\$F	\$B
23	63	0.24	0.39	-27	60	111	136

**3****Gnerer Capitalist 316-3867**

DOB: 02/19/23 AAA: 20648770 BW WT: 87 205 WT: 681

ANGUSGS
Powered by MyAngus Genetics

CED	BW	WW	WN RATIO	YW	SC	DOC
6	1.9	64	103	111	1.38	13

LD Capitalist 316
LD Dixie Erica 2053

V D A R Winston 2165
Gnerer Winny 890
Gnerer Cedar Wind 60

S A V Final Answer 0035
Prides Pita of Conanga 8821
C A Future Direction 5321
LD Dixie Erica Oar 0853
V D A R Churchill 1063
V D A R Lass 3114
V D A R Cedar Wind 8111
Gnerer Big Sky 427

MILK	CW	MARB	RE	\$EN	\$M	\$F	\$B
32	55	0.57	0.21	-11	87	98	140

4**Gnerer Capitalist 3847**

DOB: 02/14/23 AAA: 20648769 BW WT: 80 205 WT: 691

ANGUSGS
Powered by MyAngus Genetics

CED	BW	WW	WN RATIO	YW	SC	DOC
8	0.7	67	107	114	0.52	12

LD Capitalist 316
LD Dixie Erica 2053

Gnerer Guinness 818
Gnerer Lorla 360

S A V Final Answer 0035
Prides Pita of Conanga 8821
C A Future Direction 5321
LD Dixie Erica Oar 0853
Connealy Dublin 8223
Panda of Conanga 3609
VDAR Enterprise 2059
Gnerer Merels R T R304

MILK	CW	MARB	RE	\$EN	\$M	\$F	\$B
28	58	0.98	0.21	-17	62	101	158



PGD to Lots 1, 2, 6, 18, 99

5**Gnerer 316 Cap 3041**

DOB: 02/08/23 AAA: 20874631 BW WT: 90 205 WT: 675

ANGUSGS
Powered by MyAngus Genetics

CED	BW	WW	WN RATIO	YW	SC	DOC
6	1.8	65	108	97	0.3	9

LD Capitalist 316
LD Dixie Erica 2053

Gnerer Really Windy 3601
Gnerer Windy Queen 57
Gnerer Queen MAR S

S A V Final Answer 0035
Prides Pita of Conanga 8821
C A Future Direction 5321
LD Dixie Erica Oar 0853
V D A R Really Windy 4097
Gnerer Black Rose SA04 G
B C Marathon 7022
Gnerer Ponderosa S151

MILK	CW	MARB	RE	\$EN	\$M	\$F	\$B
23	28	0.34	0.44	12	84	63	96

6

Gnerer Growth Fund 3856

DOB: 02/16/23 AAA: 20647196 BW WT: 78 205 WT: 735



CED	BW	WW	WN RATIO	YW	SC	DOC
9	-0.2	83	112	155	1.08	19

Basin Payweight 1682
 Deer Valley Growth Fund
 Deer Valley Rita 36113
 VDAR Enterprise 2059
 Gnerer Lorla 360
 Gnerer Merels R T R304

Basin Payweight 0065
 21AR O Lass 7017
 Plattemere Weigh Up K360
 Deer Valley Rita 9457
 V D A R Lucys Boy
 V D A R Lass 5186
 Leachman Right Time
 Wards Merle 422

MILK	CW	MARB	RE	\$EN	\$M	\$F	\$B
40	82	0.52	0.66	-56	42	120	166

KG JUSTIFIED 3023



PGS to Lots 7, 11, 19, 46, 54, 56, 58, 62, 86, 123

7

Gnerer Justice 4 ALL-3828

DOB: 02/08/23 AAA: 20647078 BW WT: 77 205 WT: 692



CED	BW	WW	WN RATIO	YW	SC	DOC
9	-0.8	56	105	113	1.06	23

KG Justified 3023
 RL Justice
 RL Cash Lady 8988
 Gnerer New Day 984 G
 Gnerer Big Sky 253
 Gnerer Kays Sky

Connealy Judgment
 KG Miss Magic 1443
 Barstow Cash
 RL Mandate lady 2981
 Boyd New Day 8005
 Gnerer Canyon G341
 HKAR Projection 128K
 Gnerer Big Time Sky R911

MILK	CW	MARB	RE	\$EN	\$M	\$F	\$B
34	45	0.35	0.47	-9	76	90	120



Lot 7

8

Gnerer Cedar Wind 4628-3888

DOB: 02/23/23 AAA: 20633097 BW WT: 80 205 WT: 679



CED	BW	WW	WN RATIO	YW	SC	DOC
12	0.2	58	105	97	0.67	9

V D A R Cedar Wind 8111
 VDAR Cedar Wind 4628
 V D A R Elluna 5858
 Gnerer Capitalist 5364
 Gnerer Capitalist Queen 7734
 Gnerer Rose 34

Cole Creek Cedar Ridge IV
 V D A R Chloe 9727
 V D A R Black Train 1243
 VDAR Elluna 3765
 Connealy Capitalist 028
 Gnerer Lucy 364
 Gnerer Danny Boy 990 G
 Gnerer Black Rose NDY 853G

MILK	CW	MARB	RE	\$EN	\$M	\$F	\$B
24	27	0.13	0.43	-8	68	62	90



V D A R CEDAR WIND 8111

9

Gnerer Tahoe 123 - 3830

DOB: 02/08/23 AAA: 20685500 BW WT: 74 205 WT: 706



CED	BW	WW	WN RATIO	YW	SC	DOC
11	-0.5	80	107	138	1.86	23

Tehama Tahoe B767
 Gnerer Tahoe 0123
 Gnerer Rose 531
 Tehama Tahoe B767
 Gnerer Tahoe 03
 Gnerer Black Granite 87

Tehama Upward Y238
 Tehama Mary Blackbird Y684
 Basin Payweight 1682
 Gnerer Black Rose 871g
 Tehama Upward Y238
 Tehama Mary Blackbird Y684
 Connealy Black Granite
 Gnerer Kays Sky 320

MILK	CW	MARB	RE	\$EN	\$M	\$F	\$B
24	60	0.55	0.79	-30	74	102	153



TEHAMA TAHOE B767

PGS to Lots 9, 28, 43, 47, 48, 63, 75, 85, 91, 95, 97, 105, 120

10

Gnerer 316 Cap 3031

DOB: 02/02/23 AAA: 20755116 BW WT: 85 205 WT: 878



CED	BW	WW	WN RATIO	YW	SC	DOC
4	1.3	95	136	162	1	16

Connealy Capitalist 028
 LD Capitalist 316
 LD Dixie Erica 2053
 Deep Creek 38 Special 900
 Gnerer Blackbird 157
 Blackbird 19-247

S A V Final Answer 0035
 Prides Pita of Conanga 8821
 C A Future Direction 5321
 LD Dixie Erica Oar 0853
 Baldrige 38 Special
 Deep Creek Rev Princess 742
 Sitz Unmistakable 11796
 M C Blackbird 12-915

MILK	CW	MARB	RE	\$EN	\$M	\$F	\$B
23	86	0.65	0.45	-36	58	123	167



LD DIXIE ERICA 2053

PGD to Lots 3, 4, 5, 10, 12, 13, 15, 55, 61, 64, 66, 78, 107



SCAN TO GO TO OUR WEBSITE

11**Gnerer Justice 4 ALL-3836**

DOB: 02/10/23 AAA: 20647068 BW WT: 78 205 WT: 644

ANGUS
Powered by Nogen Genetics

CED	BW	WW	WN RATIO	YW	SC	DOC
8	1.2	67	100	121	1.64	16

KG Justified 3023
 RL Justice
 RL Cash Lady 8988
 Gnerer Danny Boy 990 G
 Gnerer Ponderosa 485
 Gnerer Miss Ponderosa 024 S

Connealy Judgment
 KG Miss Magic 1443
 Barstow Cash
 RL Mandate lady 2981
 Connealy Danny Boy
 Gnerer Black Rose SA04 G
 S A V 8180 Traveler 004
 Gnerers Miss Ponderosa 5359

MILK	CW	MARB	RE	SEN	SM	SF	SB
27	48	0.65	0.77	-18	71	90	144

**12****Gnerer 316 Cap 3038**

DOB: 02/05/23 AAA: 20857406 BW WT: 80 205 WT: 751

ANGUS
Powered by Nogen Genetics

CED	BW	WW	WN RATIO	YW	SC	DOC
4	2.5	67	115	116	1.67	10

LD Capitalist 316
 LD Dixie Erica 2053
 Mr Son Shine 4518
 Gnerer Canyon 106
 Gnerer Canyon 54

Connealy Capitalist 028
 S A V Final Answer 0035
 Prides Pita of Conanga 8821
 C A Future Direction 5321
 LD Dixie Erica Oar 0853
 V D A R Sonny Boy 1194
 ECC Mix Wix 1107-408
 Gnerer Really Windy 3601
 Gnerer Canyon 6595 857G

MILK	CW	MARB	RE	SEN	SM	SF	SB
31	65	0.51	0.41	-20	54	114	153

**13****Gnerer Capitalist 316-3868**

DOB: 02/14/23 AAA: 20636921 BW WT: 85 205 WT: 579

ANGUS
Powered by Nogen Genetics

CED	BW	WW	WN RATIO	YW	SC	DOC
14	-0.8	58	90	97	0.7	6

LD Capitalist 316
 LD Dixie Erica 2053
 V A R Generation 2100
 Gnerer Generation 741
 Gnerer Merel 21

Connealy Capitalist 028
 S A V Final Answer 0035
 Prides Pita of Conanga 8821
 C A Future Direction 5321
 LD Dixie Erica Oar 0853
 Connealy Consensus 7229
 Sandpoint Blackbird 8809
 V D A R Really Windy 4097
 Gnerer Merel 016 M

MILK	CW	MARB	RE	SEN	SM	SF	SB
25	39	1	0.57	-2	63	84	151



PGD to Lots 14, 23, 38, 39, 40, 41, 80, 81, 87, 93, 122

14**Gnerer Coalition 3866**

DOB: 02/19/23 AAA: 20649002 BW WT: 72 205 WT: 684

ANGUS
Powered by Nogen Genetics

CED	BW	WW	WN RATIO	YW	SC	DOC
15	-2.4	56	104	105	0.04	24

U-2 Coalition 206C
 U2 Erelite 109Z
 Gnerer Right Answer 114
 Gnerer Pride 461
 Gnerer Prides Date 540 S

Connealy Consensus 7229
 HF Miss Blackcap 27R
 Young Dale Xclusive 25X
 U-2 Erelite 1X
 Connealy Right Answer 746
 Gnerer Ponderosa 507 S
 Gnerer Big Date G 210
 V A R Pride H C 377

MILK	CW	MARB	RE	SEN	SM	SF	SB
20	27	0.41	0.24	-5	70	71	107

**15****Gnerer 316 Cap 3033**

DOB: 02/02/23 AAA: 20857402 BW WT: 78 205 WT: 816

ANGUS
Powered by Nogen Genetics

CED	BW	WW	WN RATIO	YW	SC	DOC
12	-0.7	79	125	128	1.3	13

LD Capitalist 316
 LD Dixie Erica 2053
 Deep Creek 38 Special 900
 Gnerer Patty 167
 Patty 19-747

Connealy Capitalist 028
 S A V Final Answer 0035
 Prides Pita of Conanga 8821
 C A Future Direction 5321
 LD Dixie Erica Oar 0853
 Baldrige 38 Special
 Deep Creek Rev Princess 742
 VDAR Cedar Wind 7000
 Highland Patty 17-284

MILK	CW	MARB	RE	SEN	SM	SF	SB
28	60	0.74	0.57	-33	50	99	152



16

Gnerer Son Shine 3877

DOB: 02/21/23 AAA: 20633098 BW WT: 94 205 WT: 738

ANGUSGS	CED	BW	WW	WN RATIO	YW	SC	DOC
Powered by	0	3.5	72	112	126	1.57	15
V D A R Sonny Boy 1194	V D A R Hero 7072						
Mr Son Shine 4518	V D A R Lass 2582						
ECC Mix Wix 1107-408	V D A R Cedar Wind 8111						
WAR Hero X499	VDAR Miss Wix 1107						
Gnerer Super Woman 610	S A V Pioneer 7301						
Gnerer 318 Lassie 402	WAR Analyst U512 M250 4526						
	V D A R Really Windy 4097						
	Gnerer Quality Lass 630C						
MILK	CW	MARB	RE	SEN	SM	SF	SB
19	55	0.33	0.57	-25	43	95	132



Brother Steve and Sherald Remmich, top hand and friend who has become family from Billings, MT.



Brother Mark and his sons Justin and Luke

17

Gnerer Banker 3845

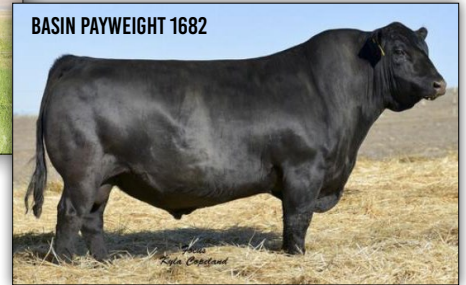
DOB: 02/13/23 AAA: 20636922 BW WT: 94 205 WT: 714

ANGUSGS	CED	BW	WW	WN RATIO	YW	SC	DOC
Powered by	5	2.2	62	109	117	0.42	23
Coleman Bravo 6313	Coleman Charlo 0256						
Coleman Banker 9215	Coleman Donna 714						
Coleman Donna 4203	Connealy Thunder						
V D A R Cedar Wind 8111	Coleman Donna 714						
Gnerer Cedar Girl 765	Cole Creek Cedar Ridge 1V						
Gnerer Sunset 042 G	V D A R Chloe 9727						
	Vermilion X Factor						
	Gnerer Big Pride G 152						
MILK	CW	MARB	RE	SEN	SM	SF	SB
23	44	0.25	0.29	-15	77	93	120



COLEMAN BRAVO 6313

Sire to Lots 33, 49, 89, 90



BASIN PAYWEIGHT 1682

PGS to Lots 1, 2, 6, 18, 99

18

Gnerer Growth Fund 3851

DOB: 02/15/23 AAA: 20647180 BW WT: 70 205 WT: 768

ANGUSGS	CED	BW	WW	WN RATIO	YW	SC	DOC
Powered by	11	0.8	74	117	136	0.22	21
Basin Payweight 1682	Basin Payweight 0065						
Deer Valley Growth Fund	21AR O Lass 7017						
Deer Valley Rita 36113	Plattemere Weigh Up K360						
Gnerer Up Side 3923	Deer Valley Rita 9457						
Gnerer Uptown Girl 688	Sitz Upside 547W						
Gnerer Canyon 234	Gnerer Dellas Ndy 923 M						
	Gnerer Danny Boy 990 G						
	Gnerer New Design 700 062 G						
MILK	CW	MARB	RE	SEN	SM	SF	SB
18	70	0.41	0.71	-22	58	123	159



19

Gnerer Justice 4 ALL-3822

DOB: 02/04/23 AAA: 20647069 BW WT: 88 205 WT: 717

ANGUSGS	CED	BW	WW	WN RATIO	YW	SC	DOC
Powered by	8	0.1	58	109	103	0.9	5
KG Justified 3023	Connealy Judgment						
RL Justice	KG Miss Magic 1443						
RL Cash Lady 8988	Barstow Cash						
V D A R Cedar Wind 8111	RL Mandate lady 2981						
Gnerer Mona 317	Cole Creek Cedar Ridge 1V						
Gnerer SA04 602 M	V D A R Chloe 9727						
	Gnerer Montana Rose 404						
	Gnerer Lucy R805						
MILK	CW	MARB	RE	SEN	SM	SF	SB
31	42	0.34	0.55	0	87	84	118



Gnerer siblings: Greg, Laura, Mary, Chris, mother Maureen, Joe, Colleen, Mark, and Steve

20

DOB: 02/16/23 AAA: 627137308 BW WT: 72 205 WT: 756

CED	BW	WW	WN RATIO	YW	SC	DOC
			125			

SEE SUPPLEMENT SHEET ON SALE DAY FOR UPDATED INFO

V A R Index 3282
 G A R Ingenuity
 Sandpoint Blackbird 8809
 V D A R Cedar Wind 8111
 Gnerer Cedar Girl 816
 Gnerer High Roller 01 M

MILK	CW	MARB	RE	SEN	SM	SF	SB



Maureen Gnerer (front row in the middle) with 11 of her 13 children! Maureen lives in Sonnette, right next door to Chris and Krista. At 81 years old she still helps with all things around the ranch and most importantly the grandkids!

21 Gnerer ShowDown 505-3906

DOB: 03/06/23 AAA: 20673651 BW WT: 90 205 WT: 654

ANGUSGS	CED	BW	WW	WN RATIO	YW	SC	DOC
Powered by	2	1.1	48	101	95	0.22	12

VDAR Showdown 7236 V D A R Sonny Boy 1194
 VDAR Showdown 5059 V D A R Forever Lady 1409
 V D A R Lucy 7950 V D A R Cedar Wind 8111
 V D A R Lucy 5354
 Gnerer Really Windy 3601 V D A R Really Windy 4097
 Gnerer Windy Girl 865 Gnerer Black Rose SA04 G
 Gnerer Lucy 412 V D A R Cedar Wind 8111
 Gnerer Lucy 129

MILK	CW	MARB	RE	\$EN	\$M	\$F	\$B
38	23	0.39	0.16	-18	50	64	98



22 Gnerer Resilient 3030

DOB: 02/02/23 AAA: 20780537 BW WT: 80 205 WT: 691

ANGUSGS	CED	BW	WW	WN RATIO	YW	SC	DOC
Powered by	12	-1.3	63	106	109	0.36	22

Sitz Resilient 10208 Sitz Stellar 726D
 VDAR Resilient 2171 Sitz Miss Burgess 1856
 V D A R Lucy 8302 V D A R Cedar Wind 8111
 V D A R Lucy 6228
 VDAR Enterprise 2059 V D A R Lucys Boy
 Gnerer Prize Ponderosa 466 V D A R Lass 5186
 Gnerer Ponderosa 256 Gnerer Enterprise 012 M
 Gnerer Ponderosa DyB 8505

MILK	CW	MARB	RE	\$EN	\$M	\$F	\$B
23	39	0.25	0.45	0	91	78	109



Joe & Renee are the owner/operators of the Olive Ranch and feedlot

23 Gnerer Coalition 3880

DOB: 02/23/23 AAA: 20648980 BW WT: 72 205 WT: 689

ANGUSGS	CED	BW	WW	WN RATIO	YW	SC	DOC
Powered by	13	-0.8	65	105	128	0.56	31

HF Syndicate 213Z Connealy Consensus 7229
 U-2 Coalition 206C HF Miss Blackcap 27R
 U2 Erelite 109Z Young Dale Xclusive 25X
 U-2 Erelite 1X
 Gnerer Really Windy 3601 V D A R Really Windy 4097
 Gnerer Windy Girl 601-9100 Gnerer Black Rose SA04 G
 Gnerer Granite 546 Connealy Black Granite
 Gnerer Ponderosa 904 S

MILK	CW	MARB	RE	\$EN	\$M	\$F	\$B
26	50	0.76	0.68	-29	68	97	160



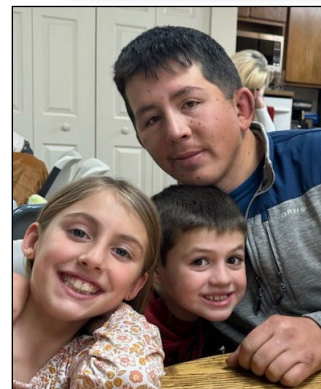
24 Gnerer ShowDown 505-3874

DOB: 02/21/23 AAA: 20673646 BW WT: 76 205 WT: 668

ANGUSGS	CED	BW	WW	WN RATIO	YW	SC	DOC
Powered by	6	0.8	55	102	91	1.11	12

VDAR Showdown 7236 V D A R Sonny Boy 1194
 VDAR Showdown 5059 V D A R Forever Lady 1409
 V D A R Lucy 7950 V D A R Cedar Wind 8111
 V D A R Lucy 5354
 A A R Ten X 7008 S A Mytty In Focus
 Gnerer Ten 501 A A R Lady Kelton 5551
 Gnerer Lassie Tressa 036 M Vermilion X Factor
 Gnerer Big Time Quality R920

MILK	CW	MARB	RE	\$EN	\$M	\$F	\$B
33	26	0.44	0.3	-7	61	61	100



Luke Gnerer has been helping in all aspects of the ranch since 2020. We appreciate all his hard work!



Anthony & Kaci Troester & their kids Kobi Lynn, Quinten, Wade. They have been with us since July 2023. A great family and we're glad to have them!

25 Gnerer ShowDown 505-3882

DOB: 02/24/23 AAA: 20674171 BW WT: 106 205 WT: 735

ANGUSGS	CED	BW	WW	WN RATIO	YW	SC	DOC
Powered by	-4	4.6	68	112	114	1.17	18

VDAR Showdown 7236 V D A R Sonny Boy 1194
 VDAR Showdown 5059 V D A R Forever Lady 1409
 V D A R Lucy 7950 V D A R Cedar Wind 8111
 V D A R Lucy 5354
 V D A R Winston 2165 V D A R Churchill 1063
 Gnerer Winny 717 V D A R Lass 3114
 Gnerer Montana 560 TC Franklin 619
 Gnerer Montana Rose 289

MILK	CW	MARB	RE	\$EN	\$M	\$F	\$B
35	36	0.48	0.15	-20	62	70	110



Hillary (Greg's wife), Ila (Steve's wife) and sister Mary

26

Gnerer Rocky 3065

DOB: 02/23/23 AAA: 20839707 BW WT: 90 205 WT: 706



CED	BW	WW	WN RATIO	YW	SC	DOC
1	3.9	79	106	126	1.24	18

K C F Bennett Boulder
Gnerer Rocky 8663
 Gnerer Uptown Girl 663
 Gnerer Blk Cedar Prize 4112
Gnerer Miss BC Prize 845
 Gnerer Della Pro 588

K C F Bennett TheRock A473
 K C F Miss 534 U431
 Gnerer Up Side 3923
 Gnerer Rose 34
 V D A R Black Cedar 8380
 Gnerer Best Time Entp 112
 AAR Program 3001
 Gnerer Della 288

MILK	CW	MARB	RE	SEN	SM	SF	SB
30	60	0.12	0.44	-23	76	92	118

27

Gnerer ShowDown 3865

DOB: 02/19/23 AAA: 20636925 BW WT: 85 205 WT: 760



CED	BW	WW	WN RATIO	YW	SC	DOC
7	1.9	67	116	119	1.36	28

VDAR Showdown 7236
VDAR Showdown 5059
 V D A R Lucy 7950
 V D A R Cedar Wind 8111
Gnerer Ponderosa 358
 Gnerer Ponderosa 6135

V D A R Sonny Boy 1194
 V D A R Forever Lady 1409
 V D A R Cedar Wind 8111
 V D A R Lucy 5354
 Cole Creek Cedar Ridge 1V
 V D A R Chloe 9727
 A A R Really Windy 1205
 Gnerers Miss Ponderosa 5359

MILK	CW	MARB	RE	SEN	SM	SF	SB
29	50	0.27	0.21	-22	66	95	122

28

Gnerer Tahoe 123-3821

DOB: 02/04/23 AAA: 20639727 BW WT: 79 205 WT: 580



CED	BW	WW	WN RATIO	YW	SC	DOC
12	-2.7	45	90	87	0.29	10

Tehama Tahoe B767
Gnerer Tahoe 0123
 Gnerer Rose 531
 Mr Son Shine 4518
Gnerer Miss SonShine 066
 Gnerer Windy Girl 689

Tehama Upward Y238
 Tehama Mary Blackbird Y684
 Basin Payweight 1682
 Gnerer Black Rose 871g
 V D A R Sonny Boy 1194
 ECC Mix Wix 1107-408
 Gnerer Really Windy 3601
 Gnerer Deltas Ndy 923 M

MILK	CW	MARB	RE	SEN	SM	SF	SB
24	29	0.71	0.52	-5	53	85	137

29

Gnerer Son Shine 4518 - 3864

DOB: 02/18/23 AAA: 20685517 BW WT: 94 205 WT: 620



CED	BW	WW	WN RATIO	YW	SC	DOC
5	2.8	60	96	104	1.15	-1

V D A R Sonny Boy 1194
Mr Son Shine 4518
 ECC Mix Wix 1107-408
 Gnerer Up Side 3923
Gnerer Uptown Girl 866
 Gnerer Heart 36

V D A R Hero 7072
 V D A R Lass 2582
 V D A R Cedar Wind 8111
 VDAR Miss Wix 1107
 Sitz Upside 547W
 Gnerer Deltas Ndy 923 M
 Gnerer Right Answer 114
 Gnerer Lucys Heart 039 M

MILK	CW	MARB	RE	SEN	SM	SF	SB
17	38	0.08	0.45	-4	55	77	98

30

Gnerer Cartwright 3037

DOB: 02/04/23 AAA: 20849506 BW WT: 70 205 WT: 700



CED	BW	WW	WN RATIO	YW	SC	DOC
10	0.6	60	107	103	-0.1	28

S A V President 6847
Janssen Cartwright 9105
 Janssen Madame Pride 5102
 Gnerer Rocky 8663
Gnerer Lucy 158
 Gnerer Remy 89

Coleman Charlo 0256
 S A V Blackcap May 4136
 S A V Harvester 0338
 S A V Madame Pride 8827
 K C F Bennett Boulder
 Gnerer Uptown Girl 663
 CTS Remedy 1T01
 Gnerer Windy Prize 612

MILK	CW	MARB	RE	SEN	SM	SF	SB
20	31	0.48	0.71	-7	59	74	121

31

Gnerer PlayBook 0118 - 3893

DOB: 02/28/23 AAA: 20685191 BW WT: 85 205 WT: 665



CED	BW	WW	WN RATIO	YW	SC	DOC
7	0.6	47	101	82	0.53	16

TEX Playbook 5437
Gnerer Play Book 0118
 Gnerer Teaka 435
 V D A R Winston 2165
Gnerer Winny 83
 Gnerer Ponderosa 6812

Basin Payweight 1682
 Rita 1C43 of 9M26 Complete
 V D A R Cedar Wind 8111
 Gnerer Teaka 20
 V D A R Churchill 1063
 V D A R Lass 3114
 Gnerer Up Side 3923
 Gnerers Miss Ponderosa 5352

MILK	CW	MARB	RE	SEN	SM	SF	SB
31	26	0.5	0.21	8	67	64	99



PGS to Lots 21, 24, 25, 27, 59, 84, 114



Morgan, Hannah and baby Kennedy Higgins
Morgan is Joe and Renee's son and Chris' right hand man at the Sonnette Ranch



PGS to Lots 16, 29, and 69



Laura's daughters: Rylee, Kyra and Teaka



Sister Laura, Tressa (Joe and Renee's daughter) and her son Jaxon



Chris, Krista and kids - Senra, Evy, Brielle, Silas and Harlan
Chris and Krista moved from Hammond to the Sonnette Ranch in 2019 where they own and operate their cow/calf operation.



Tony Story has come from Texas the last two years to help us calve and has been a real blessing!



Ida Extra 799 A A R
Donor cow

HMA
M. Gnerer

799 is a proven cow with extreme longevity. She is 17 years old and still carrying a calf! We have several daughters in our herd; two of them are 10 years old and older. She has a great disposition and is an overall great cow. She simply wouldn't still be around if she wasn't. We obtained her from a great herd of cattle from the Armstrong Angus Ranch (Chad & Trista Armstrong) near Cardwell, MT. 799 has a birth ratio of 99 and weaning ratio of 105 on her calves. She has not been pampered and works for a living with the rest of the herd. Her offspring would be a great addition to any herd!

LOTS 32-41 ARE EMBRYO CALVES

32 Gnerer Bravo 3199
DOB: 12/28/22 AAA: 20604312 BW WT: ET 205 WT:

ANGUSGS	CED	BW	WW	WN RATIO	YW	SC	DOC
Powered by	8	0.2	40		74	0.45	10

Coleman Charlo 0256
Coleman Bravo 6313
 Coleman Donna 714
 A A R Extra 814
Ida Extra 799 A A R
 Cash Flow Ida 285 A A R

O C C Paxton 730P
 Bohi Abigale 6014
 Connealy Onward
 Coleman Donna 386
 N Bar Emulation EXT
 A A R Traveler Rose 362
 Jolly R Cash Flow 9060
 Bando Ida 267 A A R

MILK	CW	MARB	RE	SEN	SM	SF	SB
24	28	0.2	0.03	12	71	74	94

34 Gnerer Tribute 3001
DOB: 01/20/23 AAA: 20613076 BW WT: ET 205 WT: 560

ANGUSGS	CED	BW	WW	WN RATIO	YW	SC	DOC
Powered by	8	-1.3	32	90	68	0.54	6

Mc Cumber Tremendous 2008
Mc Cumber Tribute 702
 Lassie 113 of Mc Cumber
 A A R Extra 814
Ida Extra 799 A A R
 Cash Flow Ida 285 A A R

O C C Tremendous 619T
 Miss Wix 2022 HC Mc Cumber
 O C C Missing Link 830M
 Lassie 935 OF Mc Cumber
 N Bar Emulation EXT
 A A R Traveler Rose 362
 Jolly R Cash Flow 9060
 Bando Ida 267 A A R

MILK	CW	MARB	RE	SEN	SM	SF	SB
28	18	-0.08	-0.05	16	66	67	71

33 Gnerer Tribute 3016
DOB: 01/25/23 AAA: 20613066 BW WT: ET 205 WT: 661

ANGUSGS	CED	BW	WW	WN RATIO	YW	SC	DOC
Powered by	8	-0.6	35	106	63	0.16	9

Mc Cumber Tremendous 2008
Mc Cumber Tribute 702
 Lassie 113 of Mc Cumber
 A A R Extra 814
Ida Extra 799 A A R
 Cash Flow Ida 285 A A R

O C C Tremendous 619T
 Miss Wix 2022 HC Mc Cumber
 O C C Missing Link 830M
 Lassie 935 OF Mc Cumber
 N Bar Emulation EXT
 A A R Traveler Rose 362
 Jolly R Cash Flow 9060
 Bando Ida 267 A A R

MILK	CW	MARB	RE	SEN	SM	SF	SB
34	16	0.14	0.14	12	57	55	74



Lot 34

Renee Gnerer

35 Gnerer Tribute 3004

DOB: 01/24/23 AAA: 20613063 BW WT: ET 205 WT: 636

ANGUSGS	CED	BW	WW	WN RATIO	YW	SC	DOC
Powered by	10	-1.5	37	102	62	0.61	17

Mc Cumber Tremendous 2008
 Mc Cumber Tribute 702
 Lassie 113 of Mc Cumber
 A A R Extra 814
 Ida Extra 799 A A R
 Cash Flow Ida 285 A A R

MILK	CW	MARB	RE	\$EN	\$M	\$F	\$B
30	15	0.09	0.04	13	70	60	74

36 Gnerer Tribute 3000

DOB: 01/19/23 AAA: 20613068 BW WT: ET 205 WT: 623

ANGUSGS	CED	BW	WW	WN RATIO	YW	SC	DOC
Powered by	14	-2.8	34	100	58	1.36	10

Mc Cumber Tremendous 2008
 Mc Cumber Tribute 702
 Lassie 113 of Mc Cumber
 A A R Extra 814
 Ida Extra 799 A A R
 Cash Flow Ida 285 A A R

MILK	CW	MARB	RE	\$EN	\$M	\$F	\$B
27	15	0.25	0.1	16	62	56	80

37 Gnerer Tribute 3017

DOB: 01/25/23 AAA: 20613072 BW WT: ET 205 WT: 642

ANGUSGS	CED	BW	WW	WN RATIO	YW	SC	DOC
Powered by	7	-1.6	32	103	54	0.82	16

Mc Cumber Tremendous 2008
 Mc Cumber Tribute 702
 Lassie 113 of Mc Cumber
 A A R Extra 814
 Ida Extra 799 A A R
 Cash Flow Ida 285 A A R

MILK	CW	MARB	RE	\$EN	\$M	\$F	\$B
32	13	0.21	0.02	12	64	56	76

38 Gnerer Coalition 3021

DOB: 01/30/23 AAA: 20613093 BW WT: ET 205 WT: 595

ANGUSGS	CED	BW	WW	WN RATIO	YW	SC	DOC
Powered by	8	0.5	45	96	81	0.8	24

HF Syndicate 213Z
 U-2 Coalition 206C
 U2 Erelite 109Z
 A A R Extra 814
 Ida Extra 799 A A R
 Cash Flow Ida 285 A A R

MILK	CW	MARB	RE	\$EN	\$M	\$F	\$B
21	36	0.36	0.33	10	76	88	120

39 Gnerer Coalition 3003

DOB: 01/24/23 AAA: 20613097 BW WT: ET 205 WT: 617

ANGUSGS	CED	BW	WW	WN RATIO	YW	SC	DOC
Powered by	14	-2.2	42	99	69	0.71	26

HF Syndicate 213Z
 U-2 Coalition 206C
 U2 Erelite 109Z
 A A R Extra 814
 Ida Extra 799 A A R
 Cash Flow Ida 285 A A R

MILK	CW	MARB	RE	\$EN	\$M	\$F	\$B
26	23	-0.06	0.18	1	74	66	76

40 Gnerer Coalition 3002

DOB: 01/22/23 AAA: 20613101 BW WT: ET 205 WT: 604

ANGUSGS	CED	BW	WW	WN RATIO	YW	SC	DOC
Powered by	10	0.3	42	97	77	0.35	28

HF Syndicate 213Z
 U-2 Coalition 206C
 U2 Erelite 109Z
 A A R Extra 814
 Ida Extra 799 A A R
 Cash Flow Ida 285 A A R

MILK	CW	MARB	RE	\$EN	\$M	\$F	\$B
31	25	-0.02	-0.03	-14	67	75	83



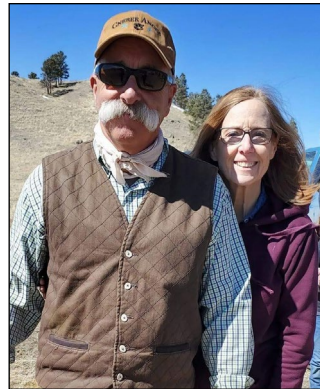
41 Gnerer Coalition 303

DOB: 01/27/23 AAA: 20613084 BW WT: ET 205 WT: 619

ANGUSGS	CED	BW	WW	WN RATIO	YW	SC	DOC
Powered by	5	0.9	39	99	68	0.08	24

HF Syndicate 213Z
 U-2 Coalition 206C
 U2 Erelite 109Z
 A A R Extra 814
 Ida Extra 799 A A R
 Cash Flow Ida 285 A A R

MILK	CW	MARB	RE	\$EN	\$M	\$F	\$B
21	17	0.16	0.19	12	68	57	79



The best neighbors, people and help - Jay and Bev Rightnour from Olive, MT



Krista's parents Jaci and Quirt - Quirt helps with all the things around the ranch and they both help wrangle the grandkids!



42 **Gnerer Cedar Wind 462-3896**
 DOB: 03/01/23 AAA: 20673648 BW WT: 80 205 WT: 635

ANGUSGS	CED	BW	WW	WN RATIO	YW	SC	DOC
Powered by	9	0.4	55	97	87	0.3	17

V D A R Cedar Wind 8111
 VDAR Cedar Wind 4628
 V D A R Elluna 5858
 Connealy Capitalist 028
 Gnerer Capitalist 582
 Gnerer Enterpize 326

Cole Creek Cedar Ridge 1V
 V D A R Chloe 9727
 V D A R Black Train 1243
 VDAR Elluna 3765
 S A V Final Answer 0035
 Prides Pita of Conanga 8821
 VDAR Enterprise 2059
 Gnerer Madam 821 M

MILK	CW	MARB	RE	\$EN	\$M	\$F	\$B
31	34	-0.15	0.65	-5	77	77	92

43 **Gnerer Tahoe 123 - 3817**
 DOB: 01/30/23 AAA: 20648611 BW WT: 70 205 WT: 658

ANGUSGS	CED	BW	WW	WN RATIO	YW	SC	DOC
Powered by	12	-1.2	58	100	97	1.87	11

Tehama Tahoe B767
 Gnerer Tahoe 0123
 Gnerer Rose 531
 Gnerer Winston 7571
 Gnerer Winny Girl 7571-094
 Gnerer Broken Bow 742

Tehama Upward Y238
 Tehama Mary Blackbird Y684
 Basin Payweight 1682
 Gnerer Black Rose 871g
 V D A R Winston 2165
 Gnerer Prediction 571
 KM Broken Bow 002
 Gnerer Miss Ponderosa 025 S

MILK	CW	MARB	RE	\$EN	\$M	\$F	\$B
16	23	0.38	0.38	-3	60	61	96

44 **Gnerer Cedar Wind 568-3838**
 DOB: 02/13/23 AAA: 20636918 BW WT: 78 205 WT: 630

ANGUSGS	CED	BW	WW	WN RATIO	YW	SC	DOC
Powered by	11	-0.8	38	98	65	1.08	14

V D A R Cedar Wind 8111
 VDAR Cedar Wind 5689
 V D A R Beauty 4321
 V D A R Clarence 2285
 Gnerer Claire 762
 Gnerer Prides Big Time 534

Cole Creek Cedar Ridge 1V
 V D A R Chloe 9727
 Koupal Juneau 797
 V D A R Beauty 0355
 Ginger Hill Treasure 233
 V D A R Elluna 3105
 Gnerer Big Time 707
 Gnerer Mosie Easy Pride C120

MILK	CW	MARB	RE	\$EN	\$M	\$F	\$B
22	2	0.11	0.02	20	75	34	49

45 **Gnerer Tribute 3052**
 DOB: 02/16/23 AAA: 20842302 BW WT: 80 205 WT: 670

ANGUSGS	CED	BW	WW	WN RATIO	YW	SC	DOC
Powered by	11	0.1	67	107	126	1.31	19

Mc Cumber Tremendous 2008
 Mc Cumber Tribute 702
 Lassie 113 of Mc Cumber
 Gnerer Rocky 8112
 Gnerer Windy Girl 0158
 Gnerer Windy Girl 558

O C C Tremendous 619T
 Miss Wix 2022 HC Mc Cumber
 O C C Missing Link 830M
 Lassie 935 OF Mc Cumber
 K C F Bennett Boulder
 Gnerer Best Time Entp 112
 Gnerer Really Windy 3601
 Gnerer Easy Pride 105

MILK	CW	MARB	RE	\$EN	\$M	\$F	\$B
26	48	0.31	0.55	-16	65	87	122

46 **Gnerer Justice 4 ALL-3860**
 DOB: 02/17/23 AAA: 20647076 BW WT: 85 205 WT: 586

ANGUSGS	CED	BW	WW	WN RATIO	YW	SC	DOC
Powered by	8	1.7	61	91	116	1.24	19

KG Justified 3023
 RL Justice
 RL Cash Lady 8988
 Gnerer Danny Boy 990 G
 Gnerer Lucy 259
 Gnerer Lucys Survivor

Connealy Judgment
 KG Miss Magic 1443
 Barstow Cash
 RL Mandate lady 2981
 Connealy Danny Boy
 Gnerer Black Rose SA04 G
 Whitestone Survivor N088
 Gnerer Lucy J R135

MILK	CW	MARB	RE	\$EN	\$M	\$F	\$B
30	51	0.24	0.49	-13	81	100	124

47 **Gnerer Tahoe 123-3871**
 DOB: 02/20/23 AAA: 20673656 BW WT: 82 205 WT: 734

ANGUSGS	CED	BW	WW	WN RATIO	YW	SC	DOC
Powered by	9	2	77	112	137	0.98	22

Tehama Tahoe B767
 Gnerer Tahoe 0123
 Gnerer Rose 531
 TEX Playbook 5437
 Gnerer PlayGirl 047
 Gnerer Windy Girl 8013

Tehama Upward Y238
 Tehama Mary Blackbird Y684
 Basin Payweight 1682
 Gnerer Black Rose 871g
 Basin Payweight 1682
 Rita 1C43 of 9M26 Complete
 Gnerer Really Windy 3601
 Gnerer Heart 486

MILK	CW	MARB	RE	\$EN	\$M	\$F	\$B
25	50	0.55	0.64	-23	57	92	141

48 **Gnerer Tahoe 123-3900**
 DOB: 03/02/23 AAA: 20673657 BW WT: 70 205 WT: 820

ANGUSGS	CED	BW	WW	WN RATIO	YW	SC	DOC
Powered by	16	-3.8	71	125	125	1.49	24

Tehama Tahoe B767
 Gnerer Tahoe 0123
 Gnerer Rose 531
 Gnerer Really Windy 601 6924
 Gnerer Really Wende 6924-090
 Gnerer Rampage 798

Tehama Upward Y238
 Tehama Mary Blackbird Y684
 Basin Payweight 1682
 Gnerer Black Rose 871g
 Gnerer Really Windy 3601
 Gnerer Halesys Heart 924 M
 Quaker Hill Rampage 0A36
 Gnerer Right Time 940 S

MILK	CW	MARB	RE	\$EN	\$M	\$F	\$B
26	46	0.93	0.33	-19	65	81	138



49 **Gnerer Bravo 3056**
 DOB: 02/17/23 AAA: 20842327 BW WT: 83 205 WT: 695

ANGUSGS	CED	BW	WW	WN RATIO	YW	SC	DOC
Powered by Neogen GenCoat	6	1.7	57	106	99	1.56	9

Coleman Charlo 0256
 Coleman Bravo 6313
 Coleman Donna 714
 Sitz Unmistakable 11796
 Blackbird 19-247
 M C Blackbird 12-915

MILK	CW	MARB	RE	\$EN	\$M	\$F	\$B
24	30	0.34	0.25	8	83	64	93

50 **Gnerer Tribute 3045**
 DOB: 02/13/23 AAA: 20839709 BW WT: 90 205 WT: 731

ANGUSGS	CED	BW	WW	WN RATIO	YW	SC	DOC
Powered by Neogen GenCoat	10	-1.1	42	109	79	1.66	5

Mc Cumber Tremendous 2008
 Mc Cumber Tribute 702
 Lassie 113 of Mc Cumber
 V D A R Clarence 2285
 Gnerer Miss Clare 815
 Gnerer Sunset Corner 67

MILK	CW	MARB	RE	\$EN	\$M	\$F	\$B
36	23	0.13	0.29	12	75	63	81

51 **Gnerer Banker 3823**
 DOB: 02/04/23 AAA: 20656499 BW WT: 85 205 WT: 675

ANGUSGS	CED	BW	WW	WN RATIO	YW	SC	DOC
Powered by Neogen GenCoat	10	-0.2	64	104	112	0.03	5

Coleman Bravo 6313
 Coleman Banker 9215
 Coleman Donna 4203
 Gnerer Danny Boy 990 G
 Gnerer Katie 48
 Gnerer Lass Katie R131

MILK	CW	MARB	RE	\$EN	\$M	\$F	\$B
24	46	0.15	0.74	-20	71	89	118

52 **Gnerer Resilient 3032**
 DOB: 02/02/23 AAA: 20780527 BW WT: 79 205 WT: 706

ANGUSGS	CED	BW	WW	WN RATIO	YW	SC	DOC
Powered by Neogen GenCoat	6	1.5	69	108	122	0.75	26

Sitz Resilient 10208
 VDAR Resilient 2171
 V D A R Lucy 8302
 VDAR Showdown 7236
 Gnerer Sunset 142
 Gnerer Sunset Corner 67

MILK	CW	MARB	RE	\$EN	\$M	\$F	\$B
29	57	0.62	0.43	-23	78	99	147

53 **Gnerer 866 Rocky 3096**
 DOB: 03/09/23 AAA: 20842334 BW WT: 88 205 WT: 714

ANGUSGS	CED	BW	WW	WN RATIO	YW	SC	DOC
Powered by Neogen GenCoat	2	2.5	63	111	101	0.72	15

K C F Bennett Boulder
 Gnerer Rocky 8663
 Gnerer Uptown Girl 663
 Gnerer Blk Cedar Prize 4112
 Gnerer Miss BC Prize 834
 Gnerer Tressa's Wind 510

MILK	CW	MARB	RE	\$EN	\$M	\$F	\$B
22	37	0.48	0.44	-9	58	70	109

54 **Gnerer Justified 3060**
 DOB: 02/18/23 AAA: 20839698 BW WT: 69 205 WT: 721

ANGUSGS	CED	BW	WW	WN RATIO	YW	SC	DOC
Powered by Neogen GenCoat	11	-1.1	62	108	109	1.46	6

KG Justified 3023
 Coleman Justified 132
 Coleman Donna 504
 Sitz Resilient 10208
 Gnerer Molly Kay 193
 Molly Kay 17-135

MILK	CW	MARB	RE	\$EN	\$M	\$F	\$B
24	36	0.99	0.29	-25	60	72	133

55 **Gnerer 316 Capitalist 3057**
 DOB: 02/18/23 AAA: 20857535 BW WT: 80 205 WT: 799

ANGUSGS	CED	BW	WW	WN RATIO	YW	SC	DOC
Powered by Neogen GenCoat	5	1.1	65	122	101	0.21	20

Connealy Capitalist 028
 LD Capitalist 316
 LD Dixie Erica 2053
 Gnerer 4C Extra 5799
 Gnerer YT Prize 732
 Gnerer Prize Traveler 221

MILK	CW	MARB	RE	\$EN	\$M	\$F	\$B
25	53	0.4	0.45	-3	69	96	130



PGD to Lots 17, 51, 60, 67, 70, 79, 82, 92, 96, 110, 118



PGD to Lots 32, 49, 89, 90

56 **Gnerer C-Justified 132-3826**
 DOB: 02/06/23 AAA: 20676763 BW WT: 79 205 WT: 758

ANGUSGS	CED	BW	WW	WN RATIO	YW	SC	DOC
Powered by Neogen GenCoat	6	1.6	77	115	131	1.08	22

KG Justified 3023
 Coleman Justified 132
 Coleman Donna 504
 Gnerer Really Windy 601 6924
 Gnerer Really Wende 6924-183
 Gnerer Rampage 770

MILK	CW	MARB	RE	\$EN	\$M	\$F	\$B
27	56	0.7	0.33	-31	69	92	140

57 **Gnerer 866 Rocky 3061**
 DOB: 02/19/23 AAA: 20842335 BW WT: 73 205 WT: 604

ANGUSGS	CED	BW	WW	WN RATIO	YW	SC	DOC
Powered by Neogen GenCoat	5	0.8	47	97	80	0.77	12

K C F Bennett Boulder
 Gnerer Rocky 8663
 Gnerer Uptown Girl 663
 Gnerer Blk Cedar Prize 4112
 Gnerer Miss BC Prize 835
 Gnerer Windy Prince 313

MILK	CW	MARB	RE	\$EN	\$M	\$F	\$B
26	25	0.09	0.43	5	68	67	90

Find us on

58

Gnerer Justice 4 All 3863

DOB: 02/18/23 AAA: 20647067 BW WT: 87 205 WT: 631

Table with columns: CED, BW, WW, WN RATIO, YW, SC, DOC. Values: 9, -0.4, 55, 98, 99, 1.12, 15. Includes pedigree: KG Justified 3023, RL Justice, Gnerer Beauty 4726.

59

Gnerer ShowDown 505-3892

DOB: 02/28/23 AAA: 20673652 BW WT: 85 205 WT: 669

Table with columns: CED, BW, WW, WN RATIO, YW, SC, DOC. Values: -2, 4.4, 72, 102, 119, 0.83, 25. Includes pedigree: VDAR Showdown 5059, Gnerer Windy Girl 601-941.

60

Gnerer Banker 3802

DOB: 01/24/23 AAA: 20656488 BW WT: 65 205 WT: 581

Table with columns: CED, BW, WW, WN RATIO, YW, SC, DOC. Values: 12, 0.2, 65, 94, 114, 0.51, 31. Includes pedigree: Coleman Banker 9215, Gnerer Cedar Girl -568-10.

61

Gnerer 316 Cap 3029

DOB: 01/31/23 AAA: 20857404 BW WT: 78 205 WT: 721

Table with columns: CED, BW, WW, WN RATIO, YW, SC, DOC. Values: 3, 1.9, 62, 110, 110, 0.83, 20. Includes pedigree: LD Capitalist 316, Gnerer Lucy 183.

62

Gnerer Justified 3023

DOB: 01/30/23 AAA: 20780530 BW WT: 71 205 WT: 681

Table with columns: CED, BW, WW, WN RATIO, YW, SC, DOC. Values: 13, -0.6, 65, 104, 119, 1.7, 8. Includes pedigree: Coleman Justified 132, Gnerer Rosetta 163.

63

Gnerer Tahoe 123-3887

DOB: 02/26/23 AAA: 20673655 BW WT: 74 205 WT: 641

Table with columns: CED, BW, WW, WN RATIO, YW, SC, DOC. Values: 6, -0.2, 59, 99, 101, 1.57, 13. Includes pedigree: Tehama Tahoe B767, Gnerer Stout 032.

64

Gnerer Capitalist 316-3853

DOB: 02/15/23 AAA: 20648739 BW WT: 90 205 WT: 725

Table with columns: CED, BW, WW, WN RATIO, YW, SC, DOC. Values: -2, 2.7, 65, 110, 117, 0.3, 23. Includes pedigree: LD Capitalist 316, Gnerer Stout 043.

65

Gnerer 568 CW 3010

DOB: 02/11/23 AAA: 20780538 BW WT: 77 205 WT: 679

Table with columns: CED, BW, WW, WN RATIO, YW, SC, DOC. Values: 8, 0.8, 47, 104, 89, 0.8, 10. Includes pedigree: VDAR Cedar Wind 8111, Gnerer Windy 050.



PGD to Lots 44, 65, 71, 104, 115, 124



Lot 62

Renee Gnerer

66**Gnerer Capitalist 316-3843**

DOB: 02/12/23 AAA: 20648767 BW WT: 74 205 WT: 681

ANGUSGS	CED	BW	WW	WN RATIO	YW	SC	DOC
Powered by Nogen GenCoast	9	-0.7	51	105	77	0.74	20

Connealy Capitalist 028
LD Capitalist 316
LD Dixie Erica 2053
Connealy Guinness
Gnerer Guinness 823
Gnerer Miss Ponderosa 321

S A V Final Answer 0035
Prides Pita of Conanga 8821
C A Future Direction 5321
LD Dixie Erica Oar 0853
Connealy Dublin 8223
Panda of Conanga 3609
VDAR Enterprize 2059
Gnerer Ponderosa 956 S

MILK	CW	MARB	RE	SEN	SM	SF	SB
31	34	0.37	0.22	9	85	73	103

67**Gnerer Banker 3837**

DOB: 02/11/23 AAA: 20656496 BW WT: 85 205 WT: 634

ANGUSGS	CED	BW	WW	WN RATIO	YW	SC	DOC
Powered by Nogen GenCoast	14	-0.9	63	96	115	0.18	21

Coleman Bravo 6313
Coleman Banker 9215
Coleman Donna 4203
Gnerer Danny Boy 990 G
Gnerer Danny Girl 61
Gnerer Early Girl 430

Coleman Charlo 0256
Coleman Donna 714
Connealy Thunder
Coleman Donna 714
Connealy Danny Boy
Gnerer Black Rose SA04 G
V D A R Cedar Wind 8111
Gnerer Early Girl 023 M

MILK	CW	MARB	RE	SEN	SM	SF	SB
36	47	0.22	0.49	-24	84	85	116

68**Gnerer 866 Rocky 3105**

DOB: 03/14/23 AAA: 20842336 BW WT: 73 205 WT: 658

ANGUSGS	CED	BW	WW	WN RATIO	YW	SC	DOC
Powered by Nogen GenCoast	6	0.3	57	102	93	1.53	18

K C F Bennett Boulder
Gnerer Rocky 8663
Gnerer Uptown Girl 663
Gnerer Blk Cedar Prize 4112
Gnerer Miss BC Prize 839
Gnerer Ponderosa 256

K C F Bennett TheRock A473
K C F Miss 534 U431
Gnerer Up Side 3923
Gnerer Rose 34
V D A R Black Cedar 8380
Gnerer Best Time Entp 112
Gnerer Enterprize 012 M
Gnerer Ponderosa DyB 850S

MILK	CW	MARB	RE	SEN	SM	SF	SB
27	45	0.44	0.23	-10	73	79	113

69**Gnerer Son Shine 3890**

DOB: 02/27/23 AAA: 20636917 BW WT: 66 205 WT: 682

ANGUSGS	CED	BW	WW	WN RATIO	YW	SC	DOC
Powered by Nogen GenCoast	13	0.2	59	106	103	1.12	14

V D A R Sonny Boy 1194
Mr Son Shine 4518
ECC Mix Wix 1107-408
Gnerer Up Side 3923
Gnerer Pride 683
Gnerer Prides Date 540 S

V D A R Hero 7072
V D A R Lass 2582
V D A R Cedar Wind 8111
VDAR Miss Wix 1107
Sitz Upside 547W
Gnerer Dellas Ndy 923 M
Gnerer Big Date G 210
V A R Pride H C 377

MILK	CW	MARB	RE	SEN	SM	SF	SB
19	31	0.48	0.24	-19	45	67	110

70**Gnerer Banker 3051**

DOB: 02/16/23 AAA: 20842318 BW WT: 76 205 WT: 608

ANGUSGS	CED	BW	WW	WN RATIO	YW	SC	DOC
Powered by Nogen GenCoast	17	-3	41	93	77	0.09	22

Coleman Bravo 6313
Coleman Banker 9215
Coleman Donna 4203
V D A R Winston 2165
Gnerer Marian 917
Gnerer Tressa Wind 66

Coleman Charlo 0256
Coleman Donna 714
Connealy Thunder
Coleman Donna 714
V D A R Churchill 1063
V D A R Lass 3114
Gnerer Really Windy 3601
Gnerer Tressa 011 M

MILK	CW	MARB	RE	SEN	SM	SF	SB
29	16	0.29	0.54	3	75	52	87

71**Gnerer Cedar Wind 568-3850**

DOB: 02/14/23 AAA: 20636924 BW WT: 80 205 WT: 606

ANGUSGS	CED	BW	WW	WN RATIO	YW	SC	DOC
Powered by Nogen GenCoast	11	0.3	46	94	83	1.07	16

V D A R Cedar Wind 8111
VDAR Cedar Wind 5689
V D A R Beauty 4321
Gnerer Really Windy 3601
Gnerer Windy Girl 8003
Gnerer Miss Upside 588

Cole Creek Cedar Ridge 1V
V D A R Chloe 9727
Koupal Juneau 797
V D A R Beauty 0355
V D A R Really Windy 4097
Gnerer Black Rose SA04 G
Gnerer Up Side 3923
Gnerer Date Line 902

MILK	CW	MARB	RE	SEN	SM	SF	SB
28	30	0.26	0.4	3	72	71	100

**72****Gnerer 866 Rocky 3099**

DOB: 03/12/23 AAA: 20842349 BW WT: 94 205 WT: 722

ANGUSGS	CED	BW	WW	WN RATIO	YW	SC	DOC
Powered by Nogen GenCoast	-2	3.8	69	112	120	1.58	29

K C F Bennett Boulder
Gnerer Rocky 8663
Gnerer Uptown Girl 663
Gnerer Really Windy 3601
Gnerer Beauty 587
Gnerer Right Beauty R345

K C F Bennett TheRock A473
K C F Miss 534 U431
Gnerer Up Side 3923
Gnerer Rose 34
V D A R Really Windy 4097
Gnerer Black Rose SA04 G
Leachman Right Time
Gnerers New Juice Pride 751

MILK	CW	MARB	RE	SEN	SM	SF	SB
23	52	0.57	0.55	-22	70	93	140

**73****Gnerer 0176 Son Shine 3074**

DOB: 02/27/23 AAA: 20842295 BW WT: 87 205 WT: 712

ANGUSGS	CED	BW	WW	WN RATIO	YW	SC	DOC
Powered by Nogen GenCoast	6	0.1	68	110	124	0.94	21

Mr Son Shine 4518
Gnerer Son Shine 0176
Gnerer Sunset 509
VDAR Showdown 7236
Gnerer Rocky Show 022
Gnerer Miss Rock 88

V D A R Sonny Boy 1194
ECC Mix Wix 1107-408
HA Program 5652
Gnerer H K S Susnet 543 G
V D A R Sonny Boy 1194
V D A R Forever Lady 1409
K C F Bennett Boulder
Gnerer Quality Black 929 M

MILK	CW	MARB	RE	SEN	SM	SF	SB
30	50	0.28	0.01	-22	66	82	109

74 Gnerer Winston 7571-3918
 DOB: 03/08/23 AAA: 20674177 BW WT: 82 205 WT: 703

ANGUSGS	CED	BW	WW	WN RATIO	YW	SC	DOC
Powered by	7	0.5	57	107	89	0.91	11

V D A R Winston 2165
 Gnerer Winston 7571
 Gnerer Prediction 571
 V D A R Four Corners 8232
 Gnerer Miss Ponderosa 7359
 Gnerers Miss Ponderosa 5359

MILK	CW	MARB	RE	\$EN	\$M	\$F	\$B
16	12	0.33	0.05	-5	58	50	79

75 Gnerer Tahoe 123 -3833
 DOB: 02/09/23 AAA: 20742098 BW WT: 60 205 WT: 658

ANGUSGS	CED	BW	WW	WN RATIO	YW	SC	DOC
Powered by	13	-2.8	48	100	81	1.39	22

Tehama Tahoe B767
 Gnerer Tahoe 0123
 Gnerer Rose 531
 V D A R Winston 2165
 Gnerer Winny Girl 045
 Gnerer Miss Ponderosa 321

MILK	CW	MARB	RE	\$EN	\$M	\$F	\$B
17	20	0.57	0.3	4	64	64	105

76 Gnerer Cartwright 3035
 DOB: 02/09/23 AAA: 20849462 BW WT: 80 205 WT: 652

ANGUSGS	CED	BW	WW	WN RATIO	YW	SC	DOC
Powered by	9	2.2	64	100	121	0.85	28

S A V President 6847
 Janssen Cartwright 9105
 Janssen Madame Pride 5102
 Gnerer Rocky 8663
 Gnerer Black Pearl 107
 Gnerer Miss Clare 927

MILK	CW	MARB	RE	\$EN	\$M	\$F	\$B
27	52	0.29	0.48	-22	58	94	125

77 Gnerer 866 Rocky 3083
 DOB: 03/02/23 AAA: 20842341 BW WT: 88 205 WT: 731

ANGUSGS	CED	BW	WW	WN RATIO	YW	SC	DOC
Powered by	2	2.4	65	113	110	0.86	24

K C F Bennett Boulder
 Gnerer Rocky 8663
 Gnerer Uptown Girl 663
 Gnerer 4C Extra 5799
 Gnerer YT Hoover
 Gnerer Hoover D Tressa 414

MILK	CW	MARB	RE	\$EN	\$M	\$F	\$B
18	51	0	0.37	-27	37	93	110

78 Gnerer Capitalist 316-3854
 DOB: 02/16/23 AAA: 20648755 BW WT: 82 205 WT: 616

ANGUSGS	CED	BW	WW	WN RATIO	YW	SC	DOC
Powered by	7	2.2	59	95	107	0.46	20

Connealy Capitalist 028
 LD Capitalist 316
 LD Dixie Erica 2053
 V D A R Winston 2165
 Gnerer Winny Girl 882
 Gnerer Uptown Girl 6340

MILK	CW	MARB	RE	\$EN	\$M	\$F	\$B
17	46	0.71	0.5	-13	54	96	150

79 Gnerer Banker 3048
 DOB: 02/16/23 AAA: 20842343 BW WT: 65 205 WT: 658

ANGUSGS	CED	BW	WW	WN RATIO	YW	SC	DOC
Powered by	19	-4.8	44	105	77	0.22	22

Coleman Bravo 6313
 Coleman Banker 9215
 Coleman Donna 4203
 Gnerer Windy Prize 3903
 Gnerer Windy Front 608
 Gnerer Tressa Frft 825M

MILK	CW	MARB	RE	\$EN	\$M	\$F	\$B
37	23	0.81	0.2	1	91	57	107

80 Gnerer Coalition 3859
 DOB: 02/17/23 AAA: 20648993 BW WT: 78 205 WT: 613

ANGUSGS	CED	BW	WW	WN RATIO	YW	SC	DOC
Powered by	12	-0.8	55	95	104	0.82	27

HF Syndicate 213Z
 U-2 Coalition 206C
 U2 Erelite 109Z
 Gnerer Really Windy 3601
 Gnerer Windy Girl 7364
 Gnerer Lucy 364

MILK	CW	MARB	RE	\$EN	\$M	\$F	\$B
22	35	0.1	0.17	-27	51	82	100

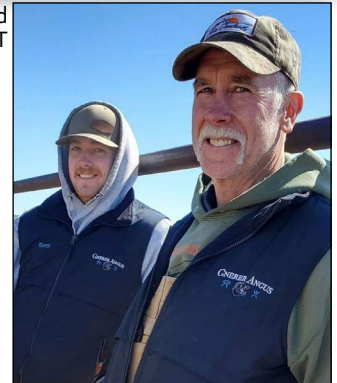


PGD to Lots 30, 76, 83, 88, 117



Renee Gnerer

Great friends and great help - Terry and son Kasey Gribben from Billings, MT



Steve and Ila's son Kaleb with girlfriend Hannah

81 Gnerer Coalition 3875

DOB: 02/21/23 AAA: 20649000 BW WT: 84 205 WT: 629

ANGUSGS	CED	BW	WW	WN RATIO	YW	SC	DOC
Powered by	10	2.1	70	97	126	0.79	29

HF Syndicate 213Z
U-2 Coalition 206C
 U2 Erelite 109Z
 Connealy Black Granite
Gnerer Granite 546
 Gnerer Ponderosa 904 S

Connealy Consensus 7229
 HF Miss Blackcap 27R
 Young Dale Xclusive 25X
 U-2 Erelite 1X
 Connealy Consensus 7229
 Eura Elga of Conanga 9109
 Gnerer Date Line 550
 Gnerer Ponderosa 613S

MILK	CW	MARB	RE	SEN	SM	SF	SB
18	45	0.35	0.68	-22	64	92	135

82 Gnerer Banker 3008

DOB: 02/11/23 AAA: 20842304 BW WT: 76 205 WT: 671

ANGUSGS	CED	BW	WW	WN RATIO	YW	SC	DOC
Powered by	17	-3.8	34	100	68	0.67	21

Coleman Bravo 6313
Coleman Banker 9215
 Coleman Donna 4203
 Gnerer Windy Prize 3903
Gnerer Lucy's Wind
 Gnerer Lucy 248

Coleman Charlo 0256
 Coleman Donna 714
 Connealy Thunder
 Coleman Donna 714
 V D A R Really Windy 4097
 Gnerer Lucy 903 M
 Gnerer Danny Boy 990 G
 Gnerer Dannels Lucy J R 632 M

MILK	CW	MARB	RE	SEN	SM	SF	SB
35	30	0.4	0.38	11	98	76	110

83 Gnerer Cartwright 3040

DOB: 02/06/23 AAA: 20780532 BW WT: 88 205 WT: 666

ANGUSGS	CED	BW	WW	WN RATIO	YW	SC	DOC
Powered by	2	4.5	76	102	126	0.65	30

S A V President 6847
Janssen Cartwright 9105
 Janssen Madame Pride 5102
 Gnerer Rocky 8663
Gnerer Prize 184
 Gnerer Miss Clare 809

Coleman Charlo 0256
 S A V Blackcap May 4136
 S A V Harvester 0338
 S A V Madame Pride 8827
 K C F Bennett Boulder
 Gnerer Uptown Girl 663
 V D A R Clarence 2285
 Gnerer Tressa Wind 66

MILK	CW	MARB	RE	SEN	SM	SF	SB
21	53	0.4	0.71	-20	68	85	126

84 Gnerer ShowDown 505-3904

DOB: 03/03/23 AAA: 20673650 BW WT: 84 205 WT: 634

ANGUSGS	CED	BW	WW	WN RATIO	YW	SC	DOC
Powered by	7	1.2	54	96	92	0.46	8

VDAR Showdown 7236
VDAR Showdown 5059
 V D A R Lucy 7950
 V D A R Cedar Wind 8111
Gnerer Cedar Girl 809
 Gnerer Pride 053 M

V D A R Sonny Boy 1194
 V D A R Forever Lady 1409
 V D A R Cedar Wind 8111
 V D A R Lucy 5354
 Cole Creek Cedar Ridge 1V
 V D A R Chloe 9727
 Gnerer Lucys 878 700 M
 Gnerer Big Time Pride R914

MILK	CW	MARB	RE	SEN	SM	SF	SB
20	28	0.57	-0.09	11	88	71	109

85 Gnerer Tahoe 123-3878

DOB: 02/22/23 AAA: 20779115 BW WT: 80 205 WT: 696

ANGUSGS	CED	BW	WW	WN RATIO	YW	SC	DOC
Powered by	6	1.2	70	108	122	2.12	16

Tehama Tahoe B767
Gnerer Tahoe 0123
 Gnerer Rose 531
 Mr Son Shine 4518
Gnerer Miss SonShine 0262
 Gnerer Super Woman 617

Tehama Upward Y238
 Tehama Mary Blackbird Y684
 Basin Payweight 1682
 Gnerer Black Rose 871g
 V D A R Sonny Boy 1194
 ECC Mix Wix 1107-408
 WAR Hero X499
 Gnerer Ponderosa 437

MILK	CW	MARB	RE	SEN	SM	SF	SB
19	37	0.6	0.37	-17	62	71	115

86 Gnerer Justified 3063

DOB: 02/22/23 AAA: 20839691 BW WT: 76 205 WT: 792

ANGUSGS	CED	BW	WW	WN RATIO	YW	SC	DOC
Powered by	2	1.7	62	118	109	1.18	31

KG Justified 3023
Coleman Justified 132
 Coleman Donna 504
 Gnerer Rocky 8663
Gnerer Best Prize 141
 Gnerer Miss BC Prize 835

Connealy Judgment
 KG Miss Magic 1443
 S A V Resource 1441
 Coleman Donna 714
 K C F Bennett Boulder
 Gnerer Uptown Girl 663
 Gnerer Blk Cedar Prize 4112
 Gnerer Windy Prince 313

MILK	CW	MARB	RE	SEN	SM	SF	SB
26	42	0.21	0.33	-2	75	78	102

87 Gnerer Coalition 3018

DOB: 01/28/23 AAA: 20871637 BW WT: 87 205 WT: 585

ANGUSGS	CED	BW	WW	WN RATIO	YW	SC	DOC
Powered by	2	3.8	64	89	107	0.87	27

HF Syndicate 213Z
U-2 Coalition 206C
 U2 Erelite 109Z
 Mc Cumber 5005 Titan 8154
Gnerer TN Heart Breaker 135
 Gnerer Heart Breaker 570

Connealy Consensus 7229
 HF Miss Blackcap 27R
 Young Dale Xclusive 25X
 U-2 Erelite 1X
 Mc Cumber Titanium 5005
 Lassie 113 of Mc Cumber
 Gnerer Right Answer 119
 Gnerer Heart Breaker 02 G

MILK	CW	MARB	RE	SEN	SM	SF	SB
21	53	0.19	0.91	-13	61	104	135

88 Gnerer Cartwright 3024

DOB: 01/30/23 AAA: 20849485 BW WT: 70 205 WT: 667

ANGUSGS	CED	BW	WW	WN RATIO	YW	SC	DOC
Powered by	12	0.2	52	102	92	1.01	16

S A V President 6847
Janssen Cartwright 9105
 Janssen Madame Pride 5102
 Gnerer Rocky 8663
Gnerer Bando 166
 Gnerer Miss BC Prize 830

Coleman Charlo 0256
 S A V Blackcap May 4136
 S A V Harvester 0338
 S A V Madame Pride 8827
 K C F Bennett Boulder
 Gnerer Uptown Girl 663
 Gnerer Blk Cedar Prize 4112
 Gnerer Windy Bando 581

MILK	CW	MARB	RE	SEN	SM	SF	SB
29	16	0.47	0.32	-10	61	48	86

89 Gnerer Bravo 3013

DOB: 02/12/23 AAA: 20780535 BW WT: 72 205 WT: 649

ANGUSGS	CED	BW	WW	WN RATIO	YW	SC	DOC
Powered by	16	-1.3	49	99	80	0.8	25

Coleman Charlo 0256
Coleman Bravo 6313
 Coleman Donna 714
 VDAR Cedar Wind 7000
Patty 19-747
 Highland Patty 17-284

O C C Paxton 730P
 Bohi Abigale 6014
 Connealy Onward
 Coleman Donna 386
 V D A R Cedar Wind 8111
 Koupal Ebonette 734
 Centennial Really Windy 070
 Highland Patty 12-096

MILK	CW	MARB	RE	SEN	SM	SF	SB
27	26	0.16	0.41	18	104	65	87

90 Gnerer Bravo 3046

DOB: 02/14/23 AAA: 20842332 BW WT: 76 205 WT: 629

ANGUSGS	CED	BW	WW	WN RATIO	YW	SC	DOC
Powered by	19	-1.9	52	101	94	0.68	21

Coleman Charlo 0256
Coleman Bravo 6313
 Coleman Donna 714
 K C F Bennett Boulder
Gnerer Miss Rock 801
 Gnerer Lucy 450

O C C Paxton 730P
 Bohi Abigale 6014
 Connealy Onward
 Coleman Donna 386
 K C F Bennett TheRock A473
 K C F Miss 534 U431
 VDAR Enterprise 2059
 Gnerer Lucy 259

MILK	CW	MARB	RE	SEN	SM	SF	SB
21	26	0.25	0.35	6	89	62	88

91 Gnerer Tahoe 123-3889
DOB: 02/27/23 AAA: 20673643 BW WT: 82 205 WT: 717

ANGUSGS	CED	BW	WW	WN RATIO	YW	SC	DOC
Powered by Nogen GenCook	8	-0.3	71	109	114	1.72	23

Tehama Tahoe B767
Gnerer Tahoe 0123
Gnerer Rose 531
Gnerer Winston 7571
Gnerer Winny Girl 7571 - 057
Gnerer Winny 730

Tehama Upward Y238
Tehama Mary Blackbird Y684
Basin Payweight 1682
Gnerer Black Rose 871g
V D A R Winston 2165
Gnerer Prediction 571
V D A R Winston 2165
Gnerer Black Side 533

MILK	CW	MARB	RE	SEN	SM	SF	SB
22	28	0.73	0.43	-13	78	57	108

92 Gnerer Banker 3053
DOB: 02/17/23 AAA: 20842321 BW WT: 70 205 WT: 625

ANGUSGS	CED	BW	WW	WN RATIO	YW	SC	DOC
Powered by Nogen GenCook	13	-0.6	60	100	109	0.64	26

Coleman Bravo 6313
Coleman Banker 9215
Coleman Donna 4203
V D A R Winston 2165
Gnerer Marian 925
Gnerer Windy Prize 5011

Coleman Charlo 0256
Coleman Donna 714
Connealy Thunder
Coleman Donna 714
V D A R Churchill 1063
V D A R Lass 3114
Gnerer Really Windy 3601
Gnerer Tressa 011 M

MILK	CW	MARB	RE	SEN	SM	SF	SB
25	43	0.52	0.47	-17	74	80	124

93 Gnerer Coalition 3857
DOB: 02/16/23 AAA: 20648985 BW WT: 70 205 WT: 622

ANGUSGS	CED	BW	WW	WN RATIO	YW	SC	DOC
Powered by Nogen GenCook	16	-2.2	45	96	88	0.75	31

HF Syndicate 213Z
U-2 Coalition 206C
U2 Erelite 109Z
Gnerer Really Windy 3601
Gnerer Windy Girl 8012
Gnerer Prediction 438

Connealy Consensus 7229
HF Miss Blackcap 27R
Young Dale Xclusive 25X
U-2 Erelite 1X
V D A R Really Windy 4097
Gnerer Black Rose SA04 G
Hoover Dam
Gnerer Prediction 231

MILK	CW	MARB	RE	SEN	SM	SF	SB
30	34	0.7	0.51	-8	75	83	136

94 Gnerer Winston 571-3931
DOB: 03/12/23 AAA: 20871663 BW WT: 79 205 WT: 555

ANGUSGS	CED	BW	WW	WN RATIO	YW	SC	DOC
Powered by Nogen GenCook	10	-1.1	49	100	84	1.48	20

V D A R Winston 2165
Gnerer Winston 7571
Gnerer Prediction 571
Hoover Dam
Gnerer Hoover Dam 4713
Gnerer Big Della G 713

V D A R Churchill 1063
V D A R Lass 3114
TC Franklin 619
Gnerer Prediction 649 S
SydGen C C & 7
Erica of Ellston C124
Sitz Alliance 6595
Gnerer Canyon G341

MILK	CW	MARB	RE	SEN	SM	SF	SB
26	21	0.33	0.28	-9	60	63	94

95 Gnerer Tahoe 123-3834
DOB: 02/10/23 AAA: 20639726 BW WT: 73 205 WT: 618

ANGUSGS	CED	BW	WW	WN RATIO	YW	SC	DOC
Powered by Nogen GenCook	8	-1.5	40	96	65	2.2	19

Tehama Tahoe B767
Gnerer Tahoe 0123
Gnerer Rose 531
V D A R Winston 2165
Gnerer Winston 0139
Gnerer Lucy 462

Tehama Upward Y238
Tehama Mary Blackbird Y684
Basin Payweight 1682
Gnerer Black Rose 871g
V D A R Churchill 1063
V D A R Lass 3114
Gnerer Right Answer 114
Gnerer Lucy 057 M

MILK	CW	MARB	RE	SEN	SM	SF	SB
17	11	0.51	0.08	22	81	55	88

96 Gnerer Banker 3055
DOB: 02/17/23 AAA: 20888605 BW WT: 72 205 WT: 652

ANGUSGS	CED	BW	WW	WN RATIO	YW	SC	DOC
Powered by Nogen GenCook	13	-2.5	45	101	82	0.42	23

Coleman Bravo 6313
Coleman Banker 9215
Coleman Donna 4203
Gnerer Rocky 8112
Gnerer B Granite 067
Gnerer B Granite 4038/646

Coleman Charlo 0256
Coleman Donna 714
Connealy Thunder
Coleman Donna 714
K C F Bennett Boulder
Gnerer Best Time Entp 112
Gnerer Black Granite 4038
Gnerer Hoover Dam 4713

MILK	CW	MARB	RE	SEN	SM	SF	SB
27	28	0.55	0.25	5	87	68	110

97 Gnerer Tahoe 123-3885
DOB: 02/25/23 AAA: 20673659 BW WT: 68 205 WT: 656

ANGUSGS	CED	BW	WW	WN RATIO	YW	SC	DOC
Powered by Nogen GenCook	13	-1.5	59	102	102	1.66	14

Tehama Tahoe B767
Gnerer Tahoe 0123
Gnerer Rose 531
Gnerer Winston 7571
Gnerer Winny Girl 571-0259
Gnerer Capitalist 769

Tehama Upward Y238
Tehama Mary Blackbird Y684
Basin Payweight 1682
Gnerer Black Rose 871g
V D A R Winston 2165
Gnerer Prediction 571
Gnerer Capitalist 5364
Gnerer Date Line 902

MILK	CW	MARB	RE	SEN	SM	SF	SB
9	21	0.68	0.33	-1	59	65	114



98 Gnerer Tribute 3047
DOB: 02/15/23 AAA: 20889143 BW WT: 80 205 WT: 636

ANGUSGS	CED	BW	WW	WN RATIO	YW	SC	DOC
Powered by Nogen GenCook	9	0.5	47	97	92	0.74	11

Mc Cumber Tremendous 2008
Mc Cumber Tribute 702
Lassie 113 of Mc Cumber
Gnerer Up Side 3923
Gnerer Uptown Girl 663
Gnerer Rose 34

O C C Tremendous 619T
Miss Wix 2022 HC Mc Cumber
O C C Missing Link 830M
Lassie 935 OF Mc Cumber
Sitz Upside 547W
Gnerer Dellas Ndy 923 M
Gnerer Danny Boy 990 G
Gnerer Black Rose NDY 853G

MILK	CW	MARB	RE	SEN	SM	SF	SB
22	38	0.42	0.32	9	81	81	116

99 Gnerer Growth Fund 3842
DOB: 02/13/23 AAA: 20647143 BW WT: 92 205 WT: 703

ANGUSGS	CED	BW	WW	WN RATIO	YW	SC	DOC
Powered by Nogen GenCook	13	1	82	109	151	0.33	19

Basin Payweight 1682
Deer Valley Growth Fund
Deer Valley Rita 36113
V D A R Winston 2165
Gnerer Winny 928
Gnerer Claire 729

Basin Payweight 0065
21AR O Lass 7017
Plattemere Weigh Up K360
Deer Valley Rita 9457
V D A R Churchill 1063
V D A R Lass 3114
V D A R Clarence 2285
Gnerer Miss 503

MILK	CW	MARB	RE	SEN	SM	SF	SB
29	57	0.11	0.36	-23	77	90	108

100 **Gnerer 0176 Son Shine 3086**
 DOB: 03/05/23 AAA: 20842351 BW WT: 76 205 WT: 595

ANGUSGS	CED	BW	WW	WN RATIO	YW	SC	DOC
Powered by Neogen GenCo	9	0.2	57	95	98	0.3	11

Mr Son Shine 4518
Gnerer Son Shine 0176
 Gnerer Sunset 509
 V D A R Really Windy 4097
Gnerer Windy Prince 300
 Gnerer Della 100

V D A R Sonny Boy 1194
 ECC Mix Wix 1107-408
 HA Program 5652
 Gnerer H K S Susnet 543 G
 A A R Really Windy 1205
 VDAR Blackbird 2031
 VDAR Enterprise 2059
 Gnerer Della S 764

MILK	CW	MARB	RE	\$EN	\$M	\$F	\$B
30	37	0.15	0.19	-4	80	76	98

101 **Gnerer 0176 Son Shine 3066**
 DOB: 02/25/23 AAA: 20842310 BW WT: 88 205 WT: 367

ANGUSGS	CED	BW	WW	WN RATIO	YW	SC	DOC
Powered by Neogen GenCo	3	1	55	99	98	0.83	22

Mr Son Shine 4518
Gnerer Son Shine 0176
 Gnerer Sunset 509
 VDAR Showdown 7236
Gnerer Miss Showy 90
 Gnerer Sunset 215

V D A R Sonny Boy 1194
 ECC Mix Wix 1107-408
 HA Program 5652
 Gnerer H K S Susnet 543 G
 V D A R Sonny Boy 1194
 V D A R Forever Lady 1409
 Gnerer Danny Boy 990 G
 Gnerer Big Pride G 152

MILK	CW	MARB	RE	\$EN	\$M	\$F	\$B
29	39	0.1	0.18	-6	67	78	95

102 **Gnerer 939 Remedy 3081**
 DOB: 02/28/23 AAA: 20842312 BW WT: 84 205 WT: 602

ANGUSGS	CED	BW	WW	WN RATIO	YW	SC	DOC
Powered by Neogen GenCo	4	0.3	51	93	106	0.9	17

CTS Remedy IT01
Gnerer Remedy 9399
 Gnerer Extra Prize 399
 V D A R Stout 1623
Gnerer Miss Stout 99
 Gnerer Sunset Wind 499

Connealy Thunder
 CTS 7V03 Bellemere Maid 9T02
 VDAR Enterprise 2059
 Ida Extra 799 A A R
 V D A R Black Cedar 8380
 V D A R Lass 0464
 V D A R Cedar Wind 8111
 Ida Extra 799 A A R

MILK	CW	MARB	RE	\$EN	\$M	\$F	\$B
26	39	0.18	0.47	-4	55	95	125

103 **Gnerer Play Book 0118-3901**
 DOB: 03/02/23 AAA: 20673649 BW WT: 76 205 WT: 701

ANGUSGS	CED	BW	WW	WN RATIO	YW	SC	DOC
Powered by Neogen GenCo	10	0.5	72	107	109	1.04	9

TEX Playbook 5437
Gnerer Play Book 0118
 Gnerer Teaka 435
 Quaker Hill Rampage 0A36
Gnerer Rampage 770
 Gnerer Quality Lass 038 C

Basin Payweight 1682
 Rita IC43 of 9M26 Complete
 V D A R Cedar Wind 8111
 Gnerer Teaka 20
 MCC Daybreak
 QHF Blackcap 6E2 of 4V16 4355
 TC Franklin 619
 Gnerer Blk Lassie 887C

MILK	CW	MARB	RE	\$EN	\$M	\$F	\$B
33	56	0.44	0.47	-1	83	93	130

104 **Gnerer Cedar Wind 568-3803**
 DOB: 01/24/23 AAA: 20632049 BW WT: 69 205 WT: 625

ANGUSGS	CED	BW	WW	WN RATIO	YW	SC	DOC
Powered by Neogen GenCo	16	-1.7	48	101	85	1.74	13

V D A R Cedar Wind 8111
VDAR Cedar Wind 5689
 V D A R Beauty 4321
 Mr Son Shine 4518
Gnerer Sonshine 118
 Gnerer Upside 597

Cole Creek Cedar Ridge IV
 V D A R Chloe 9727
 Koupal Juneau 797
 V D A R Beauty 0355
 V D A R Sonny Boy 1194
 ECC Mix Wix 1107-408
 Gnerer Up Side 3923
 Gnerer Mar Del Survivor

MILK	CW	MARB	RE	\$EN	\$M	\$F	\$B
31	20	0.37	0.18	9	77	55	86

105 **Gnerer Tahoe 123-3832**
 DOB: 02/09/23 AAA: 20742099 BW WT: 62 205 WT: 668

ANGUSGS	CED	BW	WW	WN RATIO	YW	SC	DOC
Powered by Neogen GenCo	4	-0.7	56	100	106	0.45	20

Tehama Tahoe B767
Gnerer Tahoe 0123
 Gnerer Rose 531
 V D A R Winston 2165
Gnerer Winnie Girl 045
 Gnerer Miss Ponderosa 321

Tehama Upward Y238
 Tehama Mary Blackbird Y684
 Basin Payweight 1682
 Gnerer Black Rose 871g
 V D A R Churchill 1063
 V D A R Lass 3114
 VDAR Enterprise 2059
 Gnerer Ponderosa 956 S

MILK	CW	MARB	RE	\$EN	\$M	\$F	\$B
18	39	0.65	0.36	-17	54	87	134

106 **Gnerer Winston 3076**
 DOB: 02/27/23 AAA: 20871643 BW WT: 69 205 WT: 669

ANGUSGS	CED	BW	WW	WN RATIO	YW	SC	DOC
Powered by Neogen GenCo	12	-1.5	53	104	92	0.5	15

V D A R Churchill 1063
V D A R Winston 2165
 V D A R Lass 3114
 V D A R Clarence 2285
Gnerer Miss Clare 96
 Gnerer Prize Wind 714

DFA Hero 6017
 V D A R Forever Lady 1409
 Crook Mt Really Windy 141
 V D A R Lass 5714
 Ginger Hill Treasure 233
 V D A R Elluna 3105
 Gnerer Really Windy 3601
 Gnerer Tressas Entp 110

MILK	CW	MARB	RE	\$EN	\$M	\$F	\$B
18	34	0.24	0.26	-9	55	69	96

107 **Gnerer 316 Capitalist 3049**
 DOB: 02/16/23 AAA: 20857529 BW WT: 72 205 WT: 638

ANGUSGS	CED	BW	WW	WN RATIO	YW	SC	DOC
Powered by Neogen GenCo	16	-2.6	60	102	103	0.54	29

Connealy Capitalist 028
LD Capitalist 316
 LD Dixie Erica 2053
 K C F Bennett Boulder
Gnerer Miss Rock 804
 Gnerer Prize Ponderosa 466

S A V Final Answer 0035
 Prides Pita of Cononga 8821
 C A Future Direction 5321
 LD Dixie Erica Oar 0853
 K C F Bennett TheRock A473
 K C F Miss 534 U431
 VDAR Enterprise 2059
 Gnerer Ponderosa 256

MILK	CW	MARB	RE	\$EN	\$M	\$F	\$B
19	43	0.76	0.4	-6	60	91	143

108 **Gnerer Winston 7571-3914**
 DOB: 03/08/23 AAA: 20742095 BW WT: 65 205 WT: 653

ANGUSGS	CED	BW	WW	WN RATIO	YW	SC	DOC
Powered by Neogen GenCo	16	-2.2	51	101	85	0.63	14

V D A R Winston 2165
Gnerer Winston 7571
 Gnerer Prediction 571
 Gnerer Really Windy 3601
Gnerer Windy Girl 701
 Gnerer Right Answer 398

V D A R Churchill 1063
 V D A R Lass 3114
 TC Franklin 619
 Gnerer Prediction 649 S
 V D A R Really Windy 4097
 Gnerer Black Rose SA04 G
 Gnerer Right Answer 119
 Gnerer Sunset G 903

MILK	CW	MARB	RE	\$EN	\$M	\$F	\$B
15	28	-0.12	0.24	-13	45	64	72

109 **Gnerer 972 Clarence 3106**
 DOB: 03/14/23 AAA: 20842306 BW WT: 72 205 WT: 673

ANGUSGS	CED	BW	WW	WN RATIO	YW	SC	DOC
Powered by Neogen GenCo	12	0.8	58	104	102	0.89	9

V D A R Clarence 2285
Gnerer Clarence 972
 Gnerer Marian Corners 72
 Mc Cumber 5005 Titan 8154
Gnerer Prize TN 064
 Gnerer Della 100

Ginger Hill Treasure 233
 V D A R Elluna 3105
 V D A R Winston 2165
 Gnerer Tressa's Corner 528
 Mc Cumber Titanium 5005
 Lassie 113 of Mc Cumber
 VDAR Enterprise 2059
 Gnerer Della S 764

MILK	CW	MARB	RE	\$EN	\$M	\$F	\$B
28	17	0.92	-0.1	8	84	37	92

110 **Gnerer Banker 3831**
 DOB: 02/09/23 AAA: 20656503 BW WT: 76 205 WT: 617

ANGUSGS	CED	BW	WW	WN RATIO	YW	SC	DOC
Powered by Nogen GenCook	17	-1.3	46	100	86	0.17	22

Coleman Bravo 6313
Coleman Banker 9215
 Coleman Donna 4203
 Gnerer New Day 984 G
Gnerer Montana Rose 289
 Gnerer Montana Rose 847M

Coleman Charlo 0256
 Coleman Donna 714
 Connealy Thunder
 Coleman Donna 714
 Boyd New Day 8005
 Gnerer Canyon G341
 Gnerer 420 New Design 561 C
 Gnerer SA04 603 M

MILK	CW	MARB	RE	\$EN	\$M	\$F	\$B
29	31	0.45	0.47	4	80	78	118

111 **Gnerer 0176 Son Shine 3080**
 DOB: 02/28/23 AAA: 20842333 BW WT: 84 205 WT: 667

ANGUSGS	CED	BW	WW	WN RATIO	YW	SC	DOC
Powered by Nogen GenCook	1	2.5	65	103	106	0.5	14

Mr Son Shine 4518
Gnerer Son Shine 0176
 Gnerer Sunset 509
 Gnerer Blk Cedar Prize 4112
Gnerer Miss BC Prize 830
 Gnerer Windy Bando 581

V D A R Sonny Boy 1194
 ECC Mix Wix 1107-408
 HA Program 5652
 Gnerer H K S Susnet 543 G
 V D A R Black Cedar 8380
 Gnerer Best Time Entp 112
 Gnerer Windy Prize 3903
 Gnerer Montana Rose 281

MILK	CW	MARB	RE	\$EN	\$M	\$F	\$B
28	39	-0.05	0.11	-12	62	71	83

112 **Gnerer Tremendous 3097**
 DOB: 03/10/23 AAA: 20842326 BW WT: 77 205 WT: 689

ANGUSGS	CED	BW	WW	WN RATIO	YW	SC	DOC
Powered by Nogen GenCook	13	-0.8	41	107	70	0.81	18

Mc Cumber 2008 Trmndous 727
Mc Cumber 722 Trmndous 9213
 Miss Wix 728 of Mc Cumber
 VDAR Cedar Wind 7000
Dakota Blossom 19-777
 Dakota Blossom 17-458

Mc Cumber Tremendous 2008
 Miss Wix 175 of Mc Cumber
 O C C Unmistakable 946U
 Miss Wix 2195 of Mc Cumber
 V D A R Cedar Wind 8111
 Koupal Ebonette 734
 Centennial Excitement 083
 Dakota Blossom 14-739

MILK	CW	MARB	RE	\$EN	\$M	\$F	\$B
32	21	0.58	0	12	84	56	94

113 **Gnerer Tribute 3054**
 DOB: 02/17/23 AAA: 20874601 BW WT: 65 205 WT: 642

ANGUSGS	CED	BW	WW	WN RATIO	YW	SC	DOC
Powered by Nogen GenCook	20	-5.4	49	98	90	1.49	17

Mc Cumber Tremendous 2008
Mc Cumber Tribute 702
 Lassie 113 of Mc Cumber
 Gnerer Rocky 8112
Gnerer Marian Rock 074
 Gnerer Marian 77

O C C Tremendous 619T
 Miss Wix 2022 HC Mc Cumber
 O C C Missing Link 830M
 Lassie 935 OF Mc Cumber
 K C F Bennett Boulder
 Gnerer Best Time Entp 112
 V D A R Winston 2165
 Gnerer Miss Right 581

MILK	CW	MARB	RE	\$EN	\$M	\$F	\$B
37	18	0.31	0.08	9	68	48	75

114 **Gnerer Showdown 505-3861**
 DOB: 02/17/23 AAA: 20742097 BW WT: 83 205 WT: 590

ANGUSGS	CED	BW	WW	WN RATIO	YW	SC	DOC
Powered by Nogen GenCook	3	3.9	71	91	125	1.6	27

VDAR Showdown 7236
VDAR Showdown 5059
 V D A R Lucy 7950
 V D A R Mirror Image 6087
Gnerer Image 929
 Gnerer Capitalist 364-777

V D A R Sonny Boy 1194
 V D A R Forever Lady 1409
 V D A R Cedar Wind 8111
 V D A R Lucy 5354
 W R A Mirror Image T10
 V D A R Elluna 5340
 Gnerer Capitalist 5364
 Gnerer Pride 416

MILK	CW	MARB	RE	\$EN	\$M	\$F	\$B
28	49	0.82	0.43	-16	70	92	148

115 **Gnerer Cedar Wind 3039**
 DOB: 02/05/23 AAA: 20762028 BW WT: 78 205 WT: 606

ANGUSGS	CED	BW	WW	WN RATIO	YW	SC	DOC
Powered by Nogen GenCook	6	2	52	97	83	0.65	14

V D A R Cedar Wind 8111
VDAR Cedar Wind 5689
 V D A R Beauty 4321
 VDAR Showdown 7236
Gnerer Ida 11
 Gnerer Extra Prize 677

Coleman Charlo 0256
 Coleman Donna 714
 Connealy Thunder
 Coleman Donna 714
 Boyd New Day 8005
 Gnerer Canyon G341
 Gnerer 420 New Design 561 C
 Gnerer SA04 603 M

MILK	CW	MARB	RE	\$EN	\$M	\$F	\$B
30	31	0.17	0.17	1	85	67	87

116 **Gnerer Winston 3100**
 DOB: 03/12/23 AAA: 20842317 BW WT: 70 205 WT: 662

ANGUSGS	CED	BW	WW	WN RATIO	YW	SC	DOC
Powered by Nogen GenCook	14	-2.5	42	102	71	1.62	20

V D A R Churchill 1063
V D A R Winston 2165
 V D A R Lass 3114
 V D A R Clarence 2285
Gnerer Miss Marian 916
 Gnerer Tressa Frft 825M

DFA Hero 6017
 V D A R Forever Lady 1409
 Crook Mt Really Windy 141
 V D A R Lass 5714
 Ginger Hill Treasure 233
 V D A R Elluna 3105
 Gnerer Projected 4 Front M
 Gnerer Quality Ink R608

MILK	CW	MARB	RE	\$EN	\$M	\$F	\$B
19	8	0.21	0.07	1	52	36	56

117 **Gnerer Cartwright 3009**
 DOB: 02/11/23 AAA: 20849541 BW WT: 76 205 WT: 644

ANGUSGS	CED	BW	WW	WN RATIO	YW	SC	DOC
Powered by Nogen GenCook	12	0.2	56	98	102	0.7	26

S A V President 6847
Janssen Cartwright 9105
 Janssen Madame Pride 5102
 V D A R Winston 2165
Gnerer Marian 4C 056
 Gnerer YT Sky 726

Coleman Charlo 0256
 S A V Blackcap May 4136
 S A V Harvester 0338
 S A V Madame Pride 8827
 V D A R Churchill 1063
 V D A R Lass 3114
 Gnerer 4C Extra 5799
 Gnerer Big Sky 236

MILK	CW	MARB	RE	\$EN	\$M	\$F	\$B
12	25	0.4	0.6	-19	37	62	101

118 **Gnerer Banker 3050**
 DOB: 02/16/23 AAA: 20842345 BW WT: 71 205 WT: 608

ANGUSGS	CED	BW	WW	WN RATIO	YW	SC	DOC
Powered by Nogen GenCook	18	-2.4	49	97	87	0.56	24

Coleman Bravo 6313
Coleman Banker 9215
 Coleman Donna 4203
 Gnerer Pro Prize 3825
Gnerer Prize Windy 614
 Gnerer Della 288

Coleman Charlo 0256
 Coleman Donna 714
 Connealy Thunder
 Coleman Donna 714
 VDAR Enterprise 2059
 Gnerer Tressa Frft 825M
 V D A R Really Windy 4097
 Gnerer Della 088 S

MILK	CW	MARB	RE	\$EN	\$M	\$F	\$B
28	29	0.68	0.34	10	88	71	119

119 **Gnerer Clarence 3064**
 DOB: 02/22/23 AAA: 20839703 BW WT: 77 205 WT: 555

ANGUSGS	CED	BW	WW	WN RATIO	YW	SC	DOC
Powered by Nogen GenCook	7	1.2	43	83	73	0.51	18

V D A R Clarence 2285
Gnerer Clarence 972
 Gnerer Marian Corners 72
 VDAR Enterprise 2059
Gnerer Extra Prize 399
 Ida Extra 799 A A R

Ginger Hill Treasure 233
 V D A R Elluna 3105
 V D A R Winston 2165
 Gnerer Tressa's Corner 528
 V D A R Lucys Boy
 V D A R Lass 5186
 A A R Extra 814
 Cash Flow Ida 285 A A R

MILK	CW	MARB	RE	\$EN	\$M	\$F	\$B
28	21	0.19	0.3	8	75	53	78

120 **Gnerer Tahoe 123 - 3829**
 DOB: 02/08/23 AAA: 20706331 BW WT: 63 205 WT: 635

ANGUS GS	CED	BW	WW	WN RATIO	YW	SC	DOC
Powered by Weagen Genetics	21	-4.1	47	97	83	1.43	19

Tehama Tahoe B767
 Gnerer Tahoe 0123
 Gnerer Rose 531
 TEX Playbook 5437
 Gnerer PlayBack 023
 Gnerer Kyras Pride 898M

Tehama Upward Y238
 Tehama Mary Blackbird Y684
 Basin Payweight 1682
 Gnerer Black Rose 871g
 Basin Payweight 1682
 Rita IC43 of 9M26 Complete
 Gnerer 420 New Design 561 C
 Gnerer Kyras Pride R357

MILK	CW	MARB	RE	\$EN	\$M	\$F	\$B
29	27	0.61	0.25	9	82	75	115



121 **Gnerer Tremendous 3028**
 DOB: 01/31/23 AAA: 20842283 BW WT: 68 205 WT: 598

ANGUS GS	CED	BW	WW	WN RATIO	YW	SC	DOC
Powered by Weagen Genetics	11	0.8	51	91	86	1.13	12

Mc Cumber 2008 Trmndous 72
 Mc Cumber 722 Trmndous 9213
 Miss Wix 728 of Mc Cumber
 V D A R Clarence 2285
 Gnerer Della HD 12
 Gnerer HD 949

Mc Cumber Tremendous 2008
 Miss Wix 175 of Mc Cumber
 O C C Unmistakable 946U
 Miss Wix 2195 of Mc Cumber
 Ginger Hill Treasure 233
 V D A R Elluna 3105
 Gnerer Blk Cedar Prize 4112
 Gnerer B Granite 4038/646

MILK	CW	MARB	RE	\$EN	\$M	\$F	\$B
23	17	0.02	0.23	9	70	44	59

125 **Gnerer Resilient 352**
 DOB: 02/14/23 AAA: 20839680 BW WT: 71 205 WT: 655

ANGUS GS	CED	BW	WW	WN RATIO	YW	SC	DOC
Powered by Weagen Genetics	7	0.6	38	98	66	0.34	9

Sitz Resilient 10208
 VDAR Resilient 2171
 V D A R Lucy 8302
 VDAR Enterprise 2059
 Gnerer Best Time Entp 112
 Gnerer Best Time 674 S

Sitz Stellar 726D
 Sitz Miss Burgess 1856
 V D A R Cedar Wind 8111
 V D A R Lucy 6228
 V D A R Lucys Boy
 V D A R Lass 5186
 Gnerer Big Time 707
 Gnerer Miss High Roller S607

MILK	CW	MARB	RE	\$EN	\$M	\$F	\$B
26	18	0.21	0.32	3	58	60	85

122 **Gnerer Coalition 3026**
 DOB: 01/31/23 AAA: 20842284 BW WT: 70 205 WT: 645

ANGUS GS	CED	BW	WW	WN RATIO	YW	SC	DOC
Powered by Weagen Genetics	10	-0.4	52	96	96	0.14	23

HF Syndicate 213Z
 U-2 Coalition 206C
 U2 Erelite 109Z
 Gnerer Lucy 14
 Gnerer Remy 903

Connealy Consensus 7229
 HF Miss Blackcap 27R
 Young Dale Xclusive 25X
 U-2 Erelite 1X
 Mc Cumber Titanium 5005
 Lassie 113 of Mc Cumber
 CTS Remy IT01
 Gnerer Lucy 450

MILK	CW	MARB	RE	\$EN	\$M	\$F	\$B
33	26	0.85	0.37	2	79	64	123

126 **Gnerer 939 Remedy 3085**
 DOB: 03/04/23 AAA: 20842308 BW WT: 80 205 WT: 798

ANGUS GS	CED	BW	WW	WN RATIO	YW	SC	DOC
Powered by Weagen Genetics	9	-0.3	57	121	93	0.03	21

CTS Remy IT01
 Gnerer Remedy 9399
 Gnerer Extra Prize 399
 Gnerer Rocky 8663
 Gnerer Miss RK Pro Prize 076
 Gnerer Miss Pro Prize 811

Connealy Thunder
 CTS 7V03 Bellemere Maid 9T02
 VDAR Enterprise 2059
 Ida Extra 799 A A R
 K C F Bennett Boulder
 Gnerer Uptown Girl 663
 Gnerer Pro Prize 3825
 Gnerer Windy Rosa 44 4278

MILK	CW	MARB	RE	\$EN	\$M	\$F	\$B
24	35	0.33	0.54	-3	77	77	111

123 **Gnerer Justified 3071**
 DOB: 02/26/23 AAA: 20839690 BW WT: 68 205 WT: 694

ANGUS GS	CED	BW	WW	WN RATIO	YW	SC	DOC
Powered by Weagen Genetics	15	-2.5	55	104	90	1.08	23

KG Justified 3023
 Coleman Justified 132
 Coleman Donna 504
 Mc Cumber 5005 Titan 8154
 Gnerer TN Miss Clare 140
 Gnerer Miss Clare 810

Connealy Judgment
 KG Miss Magic 1443
 S A V Resource 1441
 Coleman Donna 714
 Mc Cumber Titanium 5005
 Lassie 113 of Mc Cumber
 V D A R Clarence 2285
 Gnerer Della 100

MILK	CW	MARB	RE	\$EN	\$M	\$F	\$B
25	26	0.46	0.56	9	82	62	105



Steve and Ila's daughter Mia



Steve and Ila's son Gavin with cousin Rylee

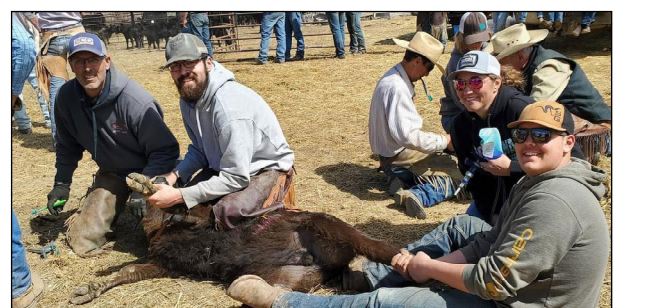
124 **Gnerer Cedar Wind 568-3811**
 DOB: 01/28/23 AAA: 20642547 BW WT: 62 205 WT: 667

ANGUS GS	CED	BW	WW	WN RATIO	YW	SC	DOC
Powered by Weagen Genetics	14	-0.2	65	101	107	2.69	16

V D A R Cedar Wind 8111
 VDAR Cedar Wind 5689
 V D A R Beauty 4321
 Gnerer Guinness 831
 Gnerer Guinness Girl 831-156
 Gnerer Capitalist 364- 777

Cole Creek Cedar Ridge 1V
 V D A R Chloe 9727
 Koupal Juneau 797
 V D A R Beauty 0355
 Connealy Guinness
 Gnerer Sunset 31
 Gnerer Capitalist 5364
 Gnerer Pride 416

MILK	CW	MARB	RE	\$EN	\$M	\$F	\$B
29	34	0.86	0.6	-4	77	61	125



Brother Greg with son Kaden, wife Hillary and son Grady





We sincerely thank you for your business and friendship!

GNERER ANGUS

10 Ash Creek Road
Olive, MT 59343

Find us on 

Join us on Saturday

MARCH 16, 2024

1pm (MST)



SCAN TO GO
TO OUR WEBSITE

Visit us online

www.GnererAngus.com

HMA
HORIZON
MARKETING AGENCY